

Product datasheet for **AP20817PU-N**

IRS1 pSer307 Rabbit Polyclonal Antibody

Product data:

Product Type:	Primary Antibodies
Applications:	IF, IHC, WB
Recommended Dilution:	Western blot: 1/500 - 1/1000. Immunohistochemistry on paraffin sections 1/50 - 1/200. Immunofluorescence: 1/50 - 1/200.
Reactivity:	Human, Mouse, Rat
Host:	Rabbit
Clonality:	Polyclonal
Specificity:	This antibody detects endogenous levels of IRS-1 protein only when phosphorylated at Ser307.
Formulation:	Phosphate buffered saline (PBS), pH 7.2. State: Aff - Purified State: Liquid purified Ig fraction Preservative: 15 mM sodium azide
Concentration:	1.0 mg/ml
Purification:	Affinity chromatography (> 95% (by SDS-PAGE)
Conjugation:	Unconjugated
Storage:	Store undiluted at 2-8°C for one month or (in aliquots) at -20°C for longer. Avoid repeated freezing and thawing.
Stability:	Shelf life: one year from despatch.
Predicted Protein Size:	~ 132, 180 kDa
Gene Name:	insulin receptor substrate 1
Database Link:	Entrez Gene 16367 Mouse Entrez Gene 25467 Rat Entrez Gene 3667 Human P35568



[View online »](#)

Background:

Insulin receptor substrate-1 (IRS-1) is a 170-185 kDa substrate of the insulin receptor that undergoes phosphorylation in response to insulin, IGF-1 and IL-4. Tyrosine (Tyr) phosphorylation of IRS-1 mediates insulin-stimulated responses, while Serine (Ser)/Threonine (Thr) phosphorylation of IRS-1 can either enhance or negate insulin effects. Tyrosines 465, 612, 632, 662, 941 and 989 of IRS-1 resemble YXXM motifs that upon phosphorylation are predicted to bind SH2 domains in the p85 regulatory subunit of PI3K, resulting in activation of p110 catalytic subunit. SHP-2 binding to IRS-1 can occur upon phosphorylation at Tyr 1179 and Tyr 1229. GRB2 binding can occur upon phosphorylation at Tyr 896. Rodent Ser 99 and Thr 502 of IRS-1 are casein kinase II-dependent phosphorylation sites. There is an increase in Ser 636 phosphorylation of IRS-1 in primary skeletal muscle cells from patients with type 2 diabetes.

Synonyms:

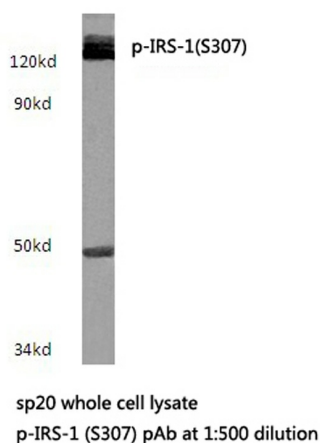
Insulin receptor substrate 1, IRS-1

Protein Families:

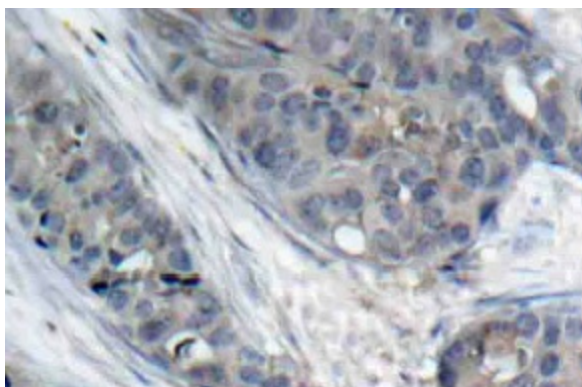
Druggable Genome

Protein Pathways:

Adipocytokine signaling pathway, Insulin signaling pathway, Neurotrophin signaling pathway, Type II diabetes mellitus

Product images:

Western blot (WB) analyzes of p-IRS-1 antibody (Cat.-No.: AP20817PU-N) in extracts from sp20 cells.



Immunohistochemistry (IHC) analyzes of p-IRS-1 antibody (Cat.-No.: AP20817PU-N) in paraffin-embedded human breast carcinoma tissue.