

## Product datasheet for **AP20814PU-S**

### VASP pSer157 Rabbit Polyclonal Antibody

#### Product data:

Product Type:	Primary Antibodies
Applications:	IHC, WB
Recommended Dilution:	<b>Western blot:</b> 1/500-1/1000. <b>Immunohistochemistry on paraffin sections</b> 1/50-1/200.
Reactivity:	Human, Mouse, Rat
Host:	Rabbit
Clonality:	Polyclonal
Specificity:	This antibody detects endogenous levels of VASP protein only when phosphorylated at Serine 157.
Formulation:	Phosphate buffered saline (PBS), pH~7.2 State: Aff - Purified State: Liquid purified Ig fraction (> 95% pure by SDS-PAGE). Preservative: 0.05% Sodium Azide
Concentration:	1.0 mg/ml
Purification:	Affinity Chromatography using epitope-specific immunogen.
Conjugation:	Unconjugated
Storage:	Store undiluted at 2-8°C for one month or (in aliquots) at -20°C for longer. Avoid repeated freezing and thawing.
Stability:	Shelf life: one year from despatch.
Predicted Protein Size:	~ 48 kDa
Gene Name:	vasodilator-stimulated phosphoprotein
Database Link:	<a href="#">Entrez Gene 22323 Mouse</a> <a href="#">Entrez Gene 361517 Rat</a> <a href="#">Entrez Gene 7408 Human P50552</a>



[View online »](#)

**Background:**

VASP (vasodilator-stimulated phosphoprotein), is involved in the maintenance of cytoarchitecture by interacting with actin-like filaments. VASP shares a limited degree of homology with the amino terminus of WASP, which is frequently mutated in WAS patients. An established substrate of cAMP and cGMP dependent kinases, VASP is phosphorylated on a regulatory serine residue 157 and localizes to focal adhesions, microfilaments and highly active regions of the plasma membrane. VASP is a protein of between 46 and 50 kDa that is highly expressed in human platelets and, like WASP, may play a role in cytoskeletal organization.

**Synonyms:**

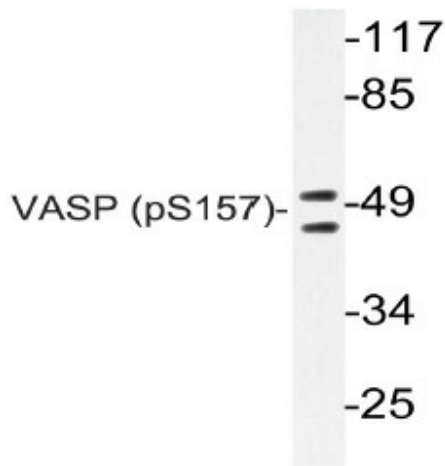
Vasodilator-stimulated phosphoprotein

**Protein Families:**

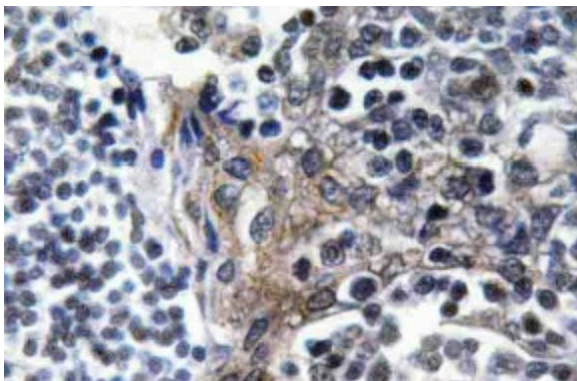
Druggable Genome, Stem cell - Pluripotency

**Protein Pathways:**

Fc gamma R-mediated phagocytosis, Focal adhesion, Leukocyte transendothelial migration

**Product images:**

Western blot (WB) analyzes of VASP antibody (Cat.-No.: [AP20814PU-N]) in extracts from HeLa HUVEC cells.



Immunohistochemistry (IHC) analyzes of VASP antibody (Cat.-No.: [AP20814PU-N]) in paraffin-embedded human tonsil tissue.