

Product datasheet for **AP20810PU-N**

FAK (PTK2) pTyr925 Rabbit Polyclonal Antibody

Product data:

Product Type:	Primary Antibodies
Applications:	IHC, WB
Recommended Dilution:	Western blot: 1/500 - 1/1000. Immunohistochemistry on paraffin sections 1/50 - 1/200.
Reactivity:	Human, Mouse, Rat
Host:	Rabbit
Clonality:	Polyclonal
Specificity:	This antibody detects endogenous levels of FAK protein only when phosphorylated at Tyr925.
Formulation:	Phosphate buffered saline (PBS), pH 7.2. State: Aff - Purified State: Liquid purified Ig fraction Preservative: 0.05% sodium azide
Concentration:	1.0 mg/ml
Purification:	Affinity chromatography (> 95% (by SDS-PAGE)
Conjugation:	Unconjugated
Storage:	Store undiluted at 2-8°C for one month or (in aliquots) at -20°C for longer. Avoid repeated freezing and thawing.
Stability:	Shelf life: one year from despatch.
Predicted Protein Size:	~ 125 kDa
Gene Name:	protein tyrosine kinase 2
Database Link:	Entrez Gene 14083 Mouse Entrez Gene 25614 Rat Entrez Gene 5747 Human Q05397



[View online »](#)

Background:

Activation of integrins in the extracellular matrix (ECM) of eukaryotic cells promotes the formation of membrane adhesion complexes, known as focal adhesions, which can include cytoskeletal proteins and protein tyrosine kinases, such as focal adhesion kinase (FAK). Phosphorylation events occurring within focal adhesions influence numerous processes that include mitogenic signaling, cell survival and cell motility. FAK is a non-receptor tyrosine kinase that is ubiquitously expressed and highly conserved between species. FAK is recruited by integrin clusters and variably phosphorylated depending on the effector molecules present in the focal adhesion. Phosphorylation of FAK Tyr 397 decreases during serum starvation, contact inhibition and cell cycle arrest, all conditions under which activating FAK Tyr 407 phosphorylation increases.

Synonyms:

FAK, Focal adhesion kinase 1, FADK1, pp125FAK, Protein-tyrosine kinase 2

Protein Families:

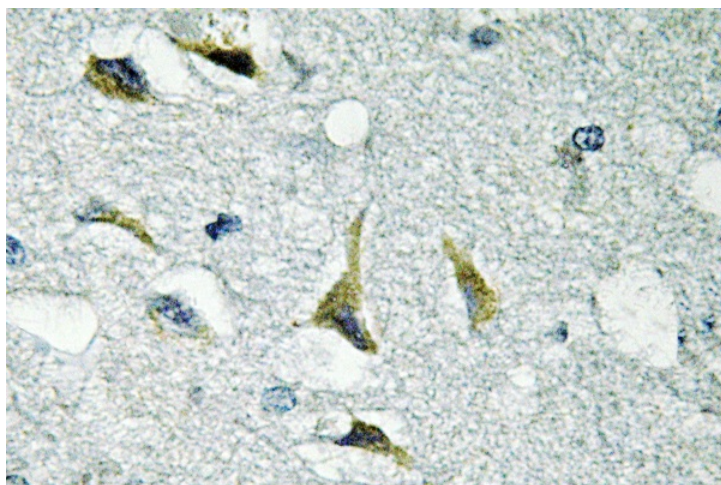
Druggable Genome, Protein Kinase

Protein Pathways:

Axon guidance, Chemokine signaling pathway, ErbB signaling pathway, Focal adhesion, Leukocyte transendothelial migration, Pathways in cancer, Regulation of actin cytoskeleton, Small cell lung cancer, VEGF signaling pathway

Product images:

Western blot (WB) analyzes of p-FAK antibody (Cat.-No.: AP20810PU-N) in extracts from HepG2 cells.



Immunohistochemistry (IHC) analyses of FAK antibody (Cat.-No.: AP20810PU-N) in paraffin-embedded human brain tissue.