

Product datasheet for **AP20808PU-N**

Cofilin 1 (CFL1) pSer3 Rabbit Polyclonal Antibody

Product data:

Product Type:	Primary Antibodies
Applications:	IHC, WB
Recommended Dilution:	Western blot: 1/500 - 1/1000. Immunohistochemistry on paraffin sections 1/50 - 1/200.
Reactivity:	Human, Mouse, Rat
Host:	Rabbit
Clonality:	Polyclonal
Specificity:	This antibody detects endogenous levels of Cofilin protein only when phosphorylated at Ser3.
Formulation:	Phosphate buffered saline (PBS), pH 7.2. State: Aff - Purified State: Liquid purified Ig fraction Preservative: 0.05% sodium azide
Concentration:	1.0 mg/ml
Purification:	Affinity chromatography (> 95% (by SDS-PAGE)
Conjugation:	Unconjugated
Storage:	Store undiluted at 2-8°C for one month or (in aliquots) at -20°C for longer. Avoid repeated freezing and thawing.
Stability:	Shelf life: one year from despatch.
Predicted Protein Size:	~ 19 kDa
Gene Name:	cofilin 1
Database Link:	Entrez Gene 12631 Mouse Entrez Gene 29271 Rat Entrez Gene 1072 Human P23528

Background: Cofilin is ubiquitously expressed in eukaryotic cells where it binds to Actin, thereby regulating the rapid cycling of Actin assembly and disassembly, essential for cellular viability. Cofilin is a low molecular weight protein that binds to filamentous F-Actin by bridging two longitudinally-associated Actin subunits, changing the F-Actin filament twist. This process is allowed by the dephosphorylation of Cofilin Ser 3 by factors like opsonized zymosan. LIM kinase 1 (LIMK-1), a serine kinase, phosphorylates Cofilin and renders it unable to bind and depolymerize F-Actin.



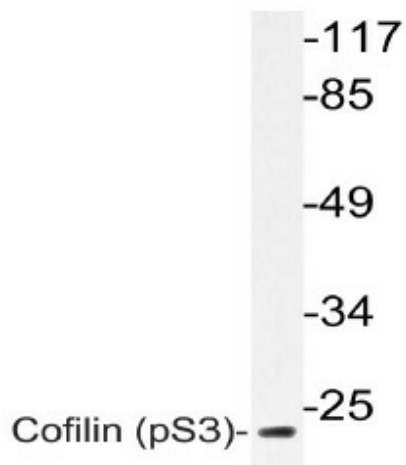
[View online »](#)

Synonyms: CFL1, CFL, p18

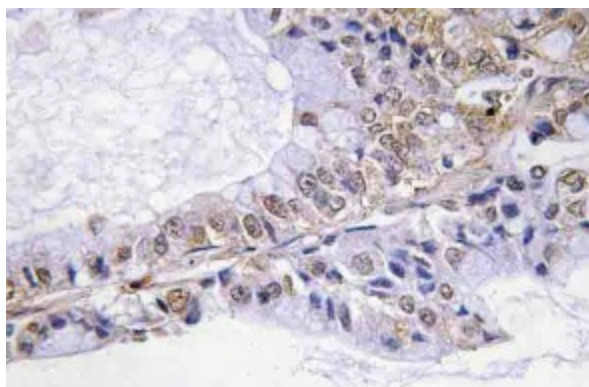
Protein Families: Druggable Genome

Protein Pathways: Axon guidance, Fc gamma R-mediated phagocytosis, Regulation of actin cytoskeleton

Product images:



Western blot (WB) analyzes of p-Cofilin antibody (Cat.-No.: AP20808PU-N) in extracts from 3T3 paclitaxel cells.



Immunohistochemistry (IHC) analyzes of p-Cofilin (Cat.-No.: AP20808PU-N) in paraffin-embedded human lung carcinoma tissue.