

## Product datasheet for **AP20807PU-N**

### CDC25A pSer75 Rabbit Polyclonal Antibody

#### Product data:

|                         |   |
|-------------------------|---|
| Product Type:           | Primary Antibodies  |
| Applications:           | WB  |
| Recommended Dilution:   | <b>Western blot:</b> 1/500 - 1/1000.  |
| Reactivity:             | Human, Mouse, Rat   |
| Host:                   | Rabbit  |
| Clonality:              | Polyclonal  |
| Specificity:            | This antibody detects endogenous levels of Cdc25A protein only when phosphorylated at Ser75.  |
| Formulation:            | Phosphate buffered saline (PBS), pH 7.2.<br>State: Aff - Purified<br>State: Liquid purified Ig fraction<br>Preservative: 0.05% sodium azide |
| Concentration:          | 1.0 mg/ml   |
| Purification:           | Affinity chromatography (> 95% (by SDS-PAGE)  |
| Conjugation:            | Unconjugated  |
| Storage:                | Store undiluted at 2-8°C for one month or (in aliquots) at -20°C for longer.<br>Avoid repeated freezing and thawing.                        |
| Stability:              | Shelf life: one year from despatch.   |
| Predicted Protein Size: | ~ 59 kDa  |
| Gene Name:              | cell division cycle 25A   |
| Database Link:          | <a href="#">Entrez Gene 12530 Mouse</a> <a href="#">Entrez Gene 171102 Rat</a> <a href="#">Entrez Gene 993 Human P30304</a>                 |



[View online »](#)

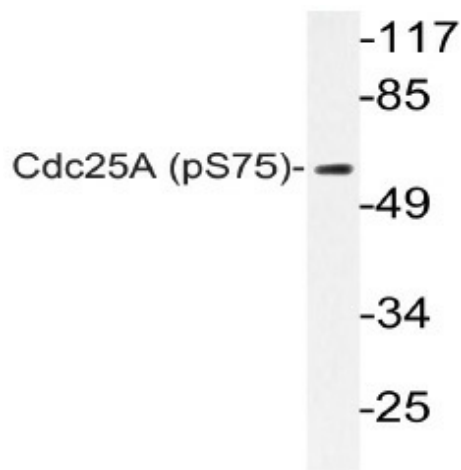
**Background:** Cyclin dependent kinases are positively regulated by association with cyclins and negatively regulated by binding to inhibitory subunits. The activity of cyclin dependent kinases is also regulated by the phosphorylation status, which is controlled by the antagonistic action of Wee1 kinase and CDC25 phosphatases. Three CDC25 genes are present in human cells: CDC25A, CDC25B, and CDC25C. These three genes function at different phases of the cell cycle. Whereas CDC25A and CDC25B are expressed throughout the cell cycle, with peak expression in G1 for CDC25A and in both G1 S phase and G2 for CDC25B, CDC25C is predominantly expressed in G2.

**Synonyms:** CDC-25A

**Protein Families:** Druggable Genome, Phosphatase

**Protein Pathways:** Cell cycle, Progesterone-mediated oocyte maturation

**Product images:**



Western blot (WB) analysis of p-Cdc25A antibody (Cat.-No.: AP20807PU-N) in extracts from Jurkat UV cells.