

## Product datasheet for **AP20803PU-N**

### FOXO1 pSer256 Rabbit Polyclonal Antibody

#### Product data:

Product Type:	Primary Antibodies
Applications:	IF, IHC, WB
Recommended Dilution:	<b>Western blot:</b> 1/500 - 1/1000. <b>Immunohistochemistry on paraffin sections</b> 1/50 - 1/200. <b>Immunofluorescence:</b> 1/50 - 1/200.
Reactivity:	Human, Mouse
Host:	Rabbit
Clonality:	Polyclonal
Specificity:	This antibody detects endogenous levels of FoxO1 protein only when phosphorylated at Ser256.
Formulation:	Phosphate buffered saline (PBS), pH 7.2. State: Aff - Purified State: Liquid purified Ig fraction Preservative: 0.05% sodium azide
Concentration:	1.0 mg/ml
Purification:	Affinity chromatography (> 95% (by SDS-PAGE)
Conjugation:	Unconjugated
Storage:	Store undiluted at 2-8°C for one month or (in aliquots) at -20°C for longer. Avoid repeated freezing and thawing.
Stability:	Shelf life: one year from despatch.
Predicted Protein Size:	~ 70-82 kDa
Gene Name:	forkhead box O1
Database Link:	<a href="#">Entrez Gene 56458 Mouse</a> <a href="#">Entrez Gene 2308 Human</a> <a href="#">Q12778</a>



[View online »](#)

**Background:**

FOXO1A (FKHR or ForkHead in Rhabdomyosarcoma) is a 70 kDa protein which is a member of a subfamily of the forkhead homeotic gene family of transcription factors. Recent studies have shown that this protein can act as either a coactivator or a corepressor of nuclear receptor activity. This action is mediated through the LXXLL motif found in the C terminus of the FOXO1A protein. The specific function of the gene has not yet been determined; however, it may play a role in myogenic growth and differentiation. Chromosomal aberrations involving FOXO1A are a cause of rhabdomyosarcoma 2 (RMS2); also known as alveolar rhabdomyosarcoma.

**Synonyms:**

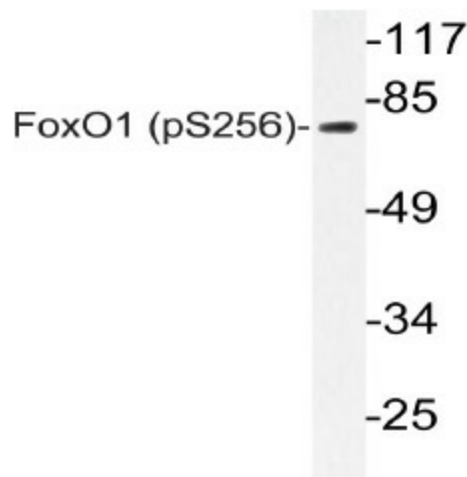
Forkhead Box Protein O1, FOXO1, FKHR

**Protein Families:**

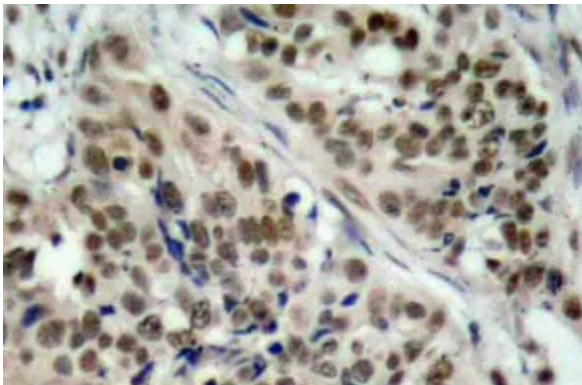
Druggable Genome, Transcription Factors

**Protein Pathways:**

Insulin signaling pathway, Pathways in cancer, Prostate cancer

**Product images:**

Western blot (WB) analyzes of p-FoxO1 antibody (Cat.-No.: AP20803PU-N) in extracts from 293 paclitaxel cells.



Immunohistochemistry (IHC) analyzes of p-FoxO1 antibody (Cat.-No.: AP20803PU-N) in paraffin-embedded human breast carcinoma tissue.