

## Product datasheet for **AP20803PU-M**

### **FOXO1 pSer256 Rabbit Polyclonal Antibody**

#### **Product data:**

|                         |                                                                                                                                                    |
|-------------------------|----------------------------------------------------------------------------------------------------------------------------------------------------|
| Product Type:           | Primary Antibodies                                                                                                                                 |
| Applications:           | IF, IHC, WB                                                                                                                                        |
| Recommended Dilution:   | <b>Western blot:</b> 1/500 - 1/1000.<br><b>Immunohistochemistry on paraffin sections</b> 1/50 - 1/200.<br><b>Immunofluorescence:</b> 1/50 - 1/200. |
| Reactivity:             | Human, Mouse                                                                                                                                       |
| Host:                   | Rabbit                                                                                                                                             |
| Clonality:              | Polyclonal                                                                                                                                         |
| Specificity:            | This antibody detects endogenous levels of FoxO1 protein only when phosphorylated at Ser256.                                                       |
| Formulation:            | Phosphate buffered saline (PBS), pH 7.2.<br>State: Aff - Purified<br>State: Liquid purified Ig fraction<br>Preservative: 0.05% sodium azide        |
| Concentration:          | 1.0 mg/ml                                                                                                                                          |
| Purification:           | Affinity chromatography (> 95% (by SDS-PAGE)                                                                                                       |
| Conjugation:            | Unconjugated                                                                                                                                       |
| Storage:                | Store undiluted at 2-8°C for one month or (in aliquots) at -20°C for longer.<br>Avoid repeated freezing and thawing.                               |
| Stability:              | Shelf life: one year from despatch.                                                                                                                |
| Predicted Protein Size: | ~ 70-82 kDa                                                                                                                                        |
| Gene Name:              | forkhead box O1                                                                                                                                    |
| Database Link:          | <a href="#">Entrez Gene 56458 Mouse</a> <a href="#">Entrez Gene 2308 Human</a><br><a href="#">Q12778</a>                                           |

[View online »](#)

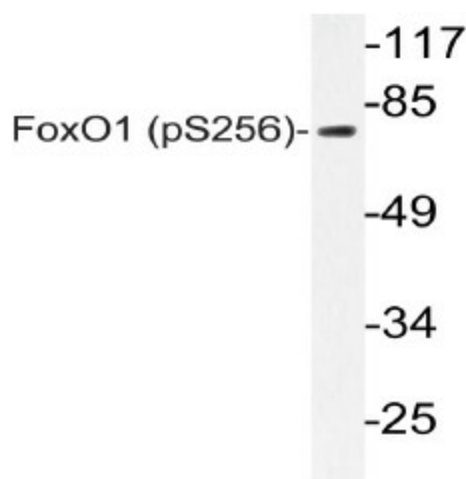
**Background:** FOXO1A (FKHR or ForkHead in Rhabdomyosarcoma) is a 70 kDa protein which is a member of a subfamily of the forkhead homeotic gene family of transcription factors. Recent studies have shown that this protein can act as either a coactivator or a corepressor of nuclear receptor activity. This action is mediated through the LXXLL motif found in the C terminus of the FOXO1A protein. The specific function of the gene has not yet been determined; however, it may play a role in myogenic growth and differentiation. Chromosomal aberrations involving FOXO1A are a cause of rhabdomyosarcoma 2 (RMS2); also known as alveolar rhabdomyosarcoma.

**Synonyms:** Forkhead Box Protein O1, FOXO1, FKHR

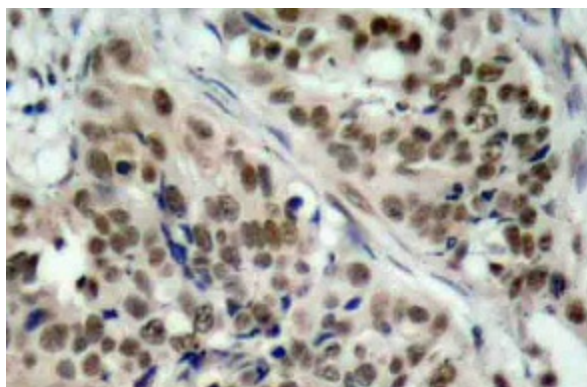
**Protein Families:** Druggable Genome, Transcription Factors

**Protein Pathways:** Insulin signaling pathway, Pathways in cancer, Prostate cancer

### Product images:



Western blot (WB) analyzes of p-FoxO1 antibody (Cat.-No.: [AP20803PU-N]) in extracts from 293 paclitaxel cells.



Immunohistochemistry (IHC) analyzes of p-FoxO1 antibody (Cat.-No.: [AP20803PU-N]) in paraffin-embedded human breast carcinoma tissue.