

Product datasheet for **AP20801PU-N**

PKC theta (PRKCQ) pSer676 Rabbit Polyclonal Antibody

Product data:

| | |
|-------------------------|--|
| Product Type: | Primary Antibodies |
| Applications: | IF, IHC, WB |
| Recommended Dilution: | Western blot: 1/500 - 1/1000. Immunohistochemistry on paraffin sections 1/50 - 1/200. Immunofluorescence: 1/50 - 1/200. |
| Reactivity: | Human, Mouse, Rat |
| Host: | Rabbit |
| Clonality: | Polyclonal |
| Specificity: | This antibody detects endogenous levels of PKC theta protein only when phosphorylated at Ser676. |
| Formulation: | Phosphate buffered saline (PBS), pH 7.2. State: Aff - Purified State: Liquid purified Ig fraction Preservative: 0.05% sodium azide |
| Concentration: | 1.0 mg/ml |
| Purification: | Affinity chromatography (> 95% (by SDS-PAGE) |
| Conjugation: | Unconjugated |
| Storage: | Store undiluted at 2-8°C for one month or (in aliquots) at -20°C for longer. Avoid repeated freezing and thawing. |
| Stability: | Shelf life: one year from despatch. |
| Predicted Protein Size: | ~ 80 kDa |
| Gene Name: | protein kinase C theta |
| Database Link: | Entrez Gene 18761 Mouse Entrez Gene 85420 Rat Entrez Gene 5588 Human Q04759 |



[View online »](#)

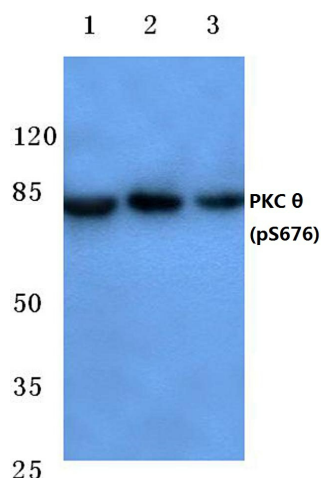
Background: Members of the protein kinase C (PKC) family play a key regulatory role in a variety of cellular functions including cell growth and differentiation, gene expression, hormone secretion and membrane function. PKCs were originally identified as serine/threonine protein kinases whose activity was dependent on calcium and phospholipids. Diacylglycerols (DAG) and tumor promoting phorbol esters bind to and activate PKC. PKCs can be subdivided into many different isoforms (alpha, beta1, beta2, gamma, delta, epsilon, zeta, eta, theta, iota, lambda, mu and nu). Patterns of expression for each PKC isoform differ among tissues and PKC family members exhibit clear differences in their cofactor dependencies.

Synonyms: PKC theta, PKC-theta, nPKC-theta, Protein kinase C theta type

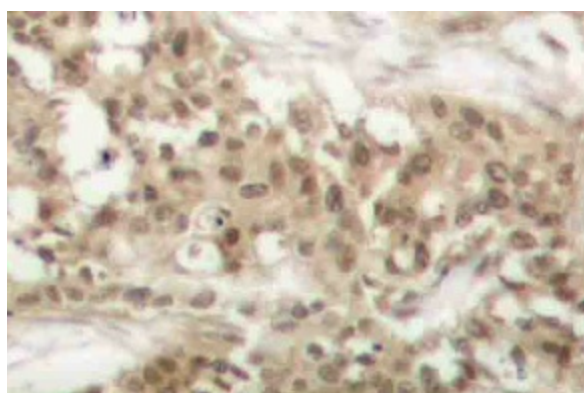
Protein Families: Druggable Genome, Protein Kinase, Transcription Factors

Protein Pathways: Adipocytokine signaling pathway, T cell receptor signaling pathway, Tight junction, Vascular smooth muscle contraction

Product images:



Western blot (WB) analysis of p-PKC θ antibody (Cat.-No.: AP20801PU-N) at 1/500 dilution. Lane 1: Hela whole cell lysate treated with UV. Lane 2: sp2/0 whole cell lysate treated with UV. Lane 3: PC12 whole cell lysate treated with UV.



Immunohistochemistry (IHC) analysis of p-PKC θ antibody (Cat.-No.: AP20801PU-N) in paraffin-embedded human breast carcinoma tissue.