

Product datasheet for **AP20798PU-M**

SNAIL (SNAI1) pSer246 Rabbit Polyclonal Antibody

Product data:

Product Type:	Primary Antibodies
Applications:	IF, IHC, WB
Recommended Dilution:	Western blot: 1/500 - 1/1000. Immunohistochemistry on paraffin sections 1/50 - 1/200. Immunofluorescence: 1/50 - 1/200.
Reactivity:	Human, Mouse
Host:	Rabbit
Clonality:	Polyclonal
Specificity:	This antibody detects endogenous levels of p-SNAI 1 protein, only when phosphorylated at Ser246.
Formulation:	Phosphate buffered saline (PBS), pH 7.2. State: Aff - Purified State: Liquid purified Ig fraction Preservative: 0.05% sodium azide
Concentration:	1.0 mg/ml
Purification:	Affinity chromatography (> 95% (by SDS-PAGE)
Conjugation:	Unconjugated
Storage:	Store undiluted at 2-8°C for one month or (in aliquots) at -20°C for longer. Avoid repeated freezing and thawing.
Stability:	Shelf life: one year from despatch.
Predicted Protein Size:	~ 29 kDa
Gene Name:	snail family transcriptional repressor 1
Database Link:	<u>Entrez Gene 20613 Mouse</u> <u>Entrez Gene 6615 Human</u> <u>O95863</u>



[View online »](#)

Background:

The SNAIL family of developmental regulatory proteins is a group of widely conserved zinc-finger proteins that regulate transcription and include the mammalian proteins SLUG, SNAI 1, the human homolog of Drosophila SNAIL, and Smad. SNAI 1 and SLUG are expressed in placenta and adult heart, liver and skeletal muscle. SNAI 1, and the corresponding mouse homolog Snai, each contain three classic zinc fingers and one atypical zinc finger, while SLUG contains five zinc finger regions and a transcriptional repression domain at the amino terminus, which enables SLUG to act as a negative regulator of gene expression. SLUG is implicated in the generation and migration of neural crest cells in human embryos and also contributes to limb bud development.

Synonyms:

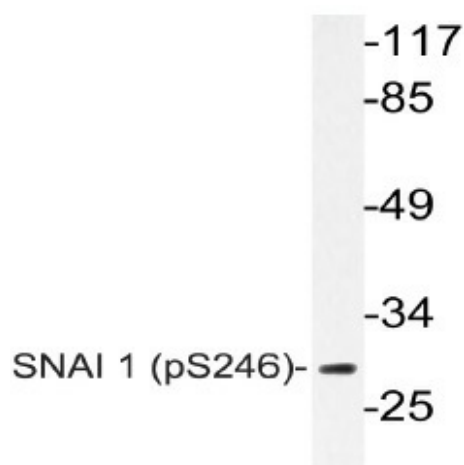
SNAH, Protein snail homolog 1

Protein Families:

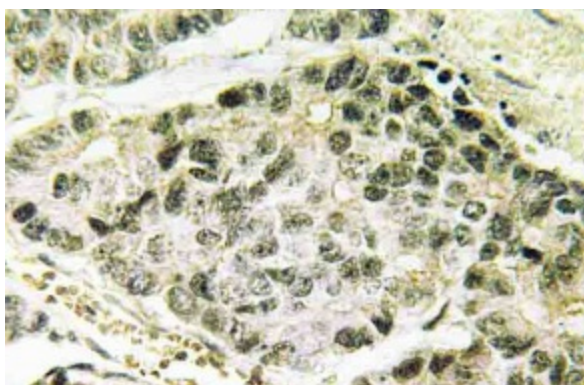
Druggable Genome

Protein Pathways:

Adherens junction

Product images:


Western blot (WB) analysis of p-SNAI 1 antibody (Cat.-No.: [AP20798PU-N]) in extracts from HT29 cells.



Immunohistochemistry (IHC) analysis of p-SNAI 1 antibody (Cat.-No.: [AP20798PU-N]) in paraffin-embedded human lung carcinoma tissue.