

## Product datasheet for **AP20795PU-M**

### PKC beta 1 (PRKCB) Rabbit Polyclonal Antibody

#### Product data:

Product Type:	Primary Antibodies
Applications:	WB
Recommended Dilution:	<b>Western blot:</b> 1/500 - 1/1000.
Reactivity:	Human, Mouse, Rat
Host:	Rabbit
Clonality:	Polyclonal
Specificity:	This antibody detects endogenous levels of PKC $\beta$ protein. (region surrounding asn655)
Formulation:	Phosphate buffered saline (PBS), pH 7.2. State: Aff - Purified State: Liquid purified Ig fraction Preservative: 15 mM sodium azide
Concentration:	1.0 mg/ml
Purification:	Affinity chromatography (> 95% (by SDS-PAGE)
Conjugation:	Unconjugated
Storage:	Store undiluted at 2-8°C for one month or (in aliquots) at -20°C for longer. Avoid repeated freezing and thawing.
Stability:	Shelf life: one year from despatch.
Predicted Protein Size:	~ 82 kDa
Gene Name:	protein kinase C beta
Database Link:	<a href="#">Entrez Gene 18751 Mouse</a> <a href="#">Entrez Gene 25023 Rat</a> <a href="#">Entrez Gene 5579 Human</a> <a href="#">P05771</a>



[View online »](#)

**Background:**

Members of the protein kinase C (PKC) family play a key regulatory role in a variety of cellular functions including cell growth and differentiation, gene expression, hormone secretion and membrane function. PKCs were originally identified as serine/threonine protein kinases whose activity was dependent on calcium and phospholipids. Diacylglycerols (DAG) and tumor promoting phorbol esters bind to and activate PKC. PKCs can be subdivided into at least two major classes including conventional (c) PKC isoforms (alpha, betaI, betaII and gamma) and novel (n) PKC isoforms (delta, epsilon, zeta, eta and theta). Patterns of expression for each PKC isoform differs among tissues and PKC family members exhibit clear differences in their cofactor dependencies. For instance, the kinase activities of nPKC delta and epsilon are independent of  $Ca^{2+}$ . On the other hand, nPKC delta and epsilon, as well as all of the cPKC members, possess phorbol esterbinding activities and kinase activities.

**Synonyms:**

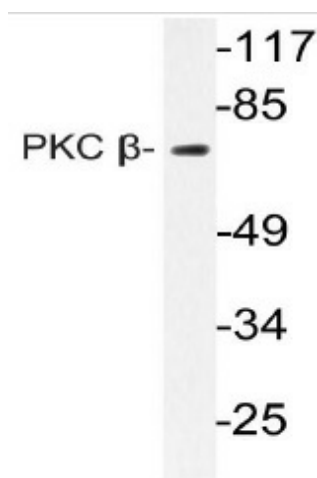
PKC-beta, PKC beta, PKC-B, PKCB, PRKCB1, Protein kinase C beta type

**Protein Families:**

Druggable Genome, Protein Kinase

**Protein Pathways:**

B cell receptor signaling pathway, Calcium signaling pathway, Chemokine signaling pathway, ErbB signaling pathway, Fc epsilon RI signaling pathway, Fc gamma R-mediated phagocytosis, Focal adhesion, Gap junction, Glioma, GnRH signaling pathway, Leukocyte transendothelial migration, Long-term depression, Long-term potentiation, MAPK signaling pathway, Melanogenesis, Natural killer cell mediated cytotoxicity, Non-small cell lung cancer, Pathways in cancer, Phosphatidylinositol signaling system, Tight junction, Vascular smooth muscle contraction, VEGF signaling pathway, Vibrio cholerae infection, Wnt signaling pathway

**Product images:**


Western blot (WB) analysis of PKC beta antibody (Cat.-No.: [AP20795PU-N]) in extracts from HeLa cells