

## Product datasheet for **AP20794PU-M**

### Trypsin (PRSS3) Rabbit Polyclonal Antibody

#### Product data:

Product Type:	Primary Antibodies
Applications:	WB
Recommended Dilution:	<b>Western blot:</b> 1/500 - 1/1000.
Reactivity:	Human
Host:	Rabbit
Clonality:	Polyclonal
Specificity:	This antibody detects endogenous levels of Trypsin- 3 protein. (region surrounding Met166)
Formulation:	Phosphate buffered saline (PBS), pH 7.2. State: Aff - Purified State: Liquid purified Ig fraction Preservative: 0.05% sodium azide
Concentration:	1.0 mg/ml
Purification:	Affinity chromatography (> 95% (by SDS-PAGE)
Conjugation:	Unconjugated
Storage:	Store undiluted at 2-8°C for one month or (in aliquots) at -20°C for longer. Avoid repeated freezing and thawing.
Stability:	Shelf life: one year from despatch.
Predicted Protein Size:	~ 32 kDa
Gene Name:	protease, serine 3
Database Link:	<a href="#">Entrez Gene 5646 Human P35030</a>

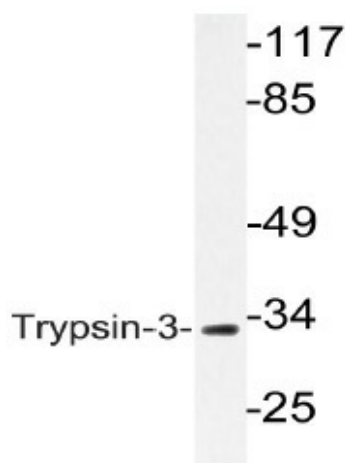
[View online »](#)

**Background:**

The human pancreas secretes three different isoforms of the inactive trypsinogen into the small intestine, namely cationic trypsinogen, anionic trypsinogen (the two major isoforms) and mesotrypsinogen (a minor isoform). In the small intestine, each isoform is cleaved by Enterokinase into its active form, Trypsin-1, Trypsin-2 and Trypsin-3, respectively. All trypsins are members of the serine protease Trypsin family. The activated trypsins go on to activate other protease zymogens and play a role in the autoactivation of trypsinogens. This suggests an important role for trypsins in digestion. Mutations in the gene encoding Trypsin-1 that stimulate its activity are associated with autosomal dominant hereditary pancreatitis (HCP), also known as chronic pancreatitis (CP), a disease characterized by persistent, severe abdominal pain due to calcifications of the parenchyma, pancreatic stones, cysts and pancreatic head enlargement. Trypsin-3 is expressed in the brain in addition to the pancreas.

**Synonyms:**

PRSS4, TRY3, TRY4, Brain trypsinogen, Mesotrypsinogen, Serine protease 3, Serine protease 4, Trypsin III, Trypsin IV

**Product images:**


Western blot (WB) analysis of Trypsin-3 antibody (Cat.-No.: [AP20794PU-N]) in extracts from A549 cells