

Product datasheet for **AP20791PU-N**

SERPINB2 Rabbit Polyclonal Antibody

Product data:

Product Type:	Primary Antibodies
Applications:	IHC, WB
Recommended Dilution:	Western blot: 1/500 - 1/1000. Immunohistochemistry on paraffin sections 1/50 - 1/200.
Reactivity:	Human
Host:	Rabbit
Clonality:	Polyclonal
Specificity:	This antibody detects endogenous levels of PAI-2 protein. (region surrounding Val307)
Formulation:	Phosphate buffered saline (PBS), pH 7.2. State: Aff - Purified State: Liquid purified Ig fraction Preservative: 0.05% sodium azide
Concentration:	1.0 mg/ml
Purification:	Affinity chromatography (> 95% (by SDS-PAGE)
Conjugation:	Unconjugated
Storage:	Store undiluted at 2-8°C for one month or (in aliquots) at -20°C for longer. Avoid repeated freezing and thawing.
Stability:	Shelf life: one year from despatch.
Predicted Protein Size:	~ 45 kDa
Gene Name:	serpin family B member 2
Database Link:	Entrez Gene 5055 Human P05120



[View online »](#)

Background:

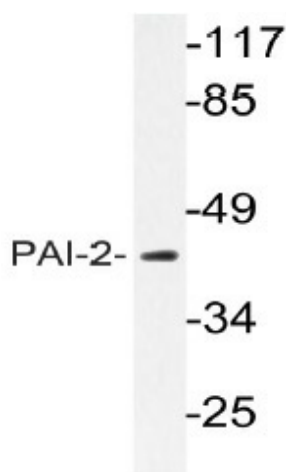
PAI-1 and PAI-2 (for plasminogen activator inhibitor-1 and -2) are members of the serpin serine proteinase inhibitor family. PAI-1 and PAI-2 have been shown to regulate uPA (urokinase-type plasminogen activator) and tPA (tissue plasminogen activator), resulting in the inhibition of proteolytic activity. Members of the serpin family generally complex with their target proteinases, then disassociate slowly into cleaved species that fold into stable inactive forms. PAI-1 can fold into the inactive state without cleavage, resulting in the latent form of PAI-1. Activity can be restored to the latent form of PAI-1 through denaturation and renaturation. PAI-2 occurs in secreted and cytosolic forms through facultative polypeptide translocation. uPA is a serine proteinase that is a member of the trypsin family. It is responsible for the cleavage of plasminogen at the Arg-Val bond to produce plasmin. uPA consists of two chains designated A and B. The A chain can be cleaved, resulting in low and high molecular mass forms of uPA.

Synonyms:

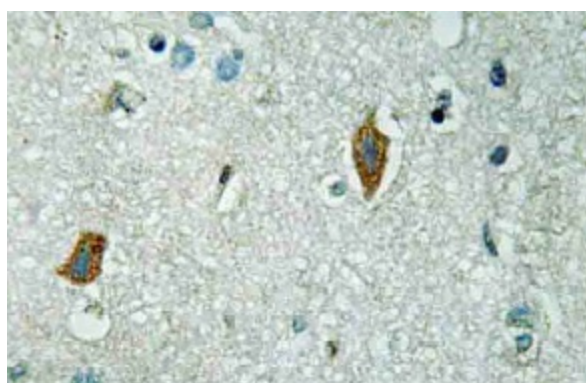
Serpin B2, PAI-2, Plasminogen activator inhibitor 2, PLANH2

Protein Families:

Druggable Genome, Secreted Protein

Product images:

Western blot (WB) analyzes of PAI-2 antibody (Cat.-No.: AP20791PU-N) in extracts from MCF-7 cells.



Immunohistochemistry (IHC) analyzes of PAI-2 antibody (Cat.-No.: AP20791PU-N) in paraffin-embedded human brain tissue.