

Product datasheet for **AP20790PU-M**

MMP12 Rabbit Polyclonal Antibody

Product data:

Product Type:	Primary Antibodies
Applications:	IHC, WB
Recommended Dilution:	Western Blot: 1/500 - 1/1000. Immunohistochemistry on paraffin sections 1/50 - 1/200.
Reactivity:	Human
Host:	Rabbit
Clonality:	Polyclonal
Specificity:	This antibody detects endogenous levels of MMP-12 protein. (region surrounding Asp411)
Formulation:	Phosphate buffered saline (PBS), pH 7.2. State: Aff - Purified State: Liquid purified Ig fraction Preservative: 0.05% sodium azide
Concentration:	1.0 mg/ml
Purification:	Affinity chromatography (> 95% (by SDS-PAGE)
Conjugation:	Unconjugated
Storage:	Store undiluted at 2-8°C for one month or (in aliquots) at -20°C for longer. Avoid repeated freezing and thawing.
Stability:	Shelf life: one year from despatch.
Predicted Protein Size:	~ 48 kDa
Gene Name:	matrix metalloproteinase 12
Database Link:	<u>Entrez Gene 4321 Human P39900</u>



[View online »](#)

Background:

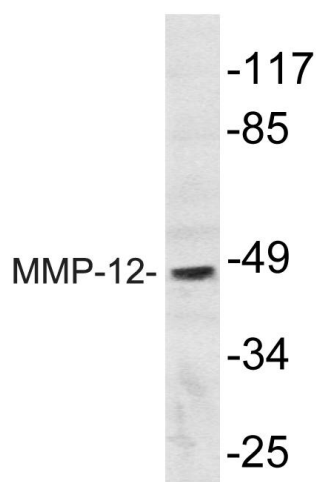
The matrix metalloproteinases (MMP) are a family of peptidase enzymes responsible for the degradation of extracellular matrix components, including collagen, gelatin, Fibronectin, Laminin and proteoglycan. Transcription of MMP genes is differentially activated by phorbol ester, lipopolysaccharide (LPS) or staphylococcal enterotoxin B (SEB). MMP catalysis requires both calcium and zinc. MMP-12 (also designated macrophage metalloelastase) is produced in alveolar macrophages and degrades elastin. MMP-12 may contribute to elastin degradation occurring in granulomatous skin diseases and may also participate in macrophage migration through the epidermal and vascular basement membranes in inflammatory disorders.

Synonyms:

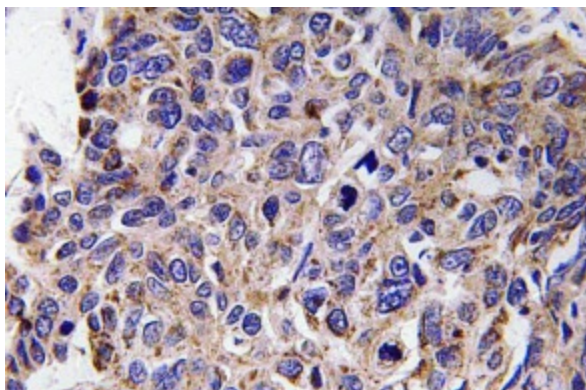
Macrophage metalloelastase, HME, ME, Matrix metalloproteinase-12, MMP12, Macrophage elastase

Protein Families:

Druggable Genome, Protease

Product images:


Western blot (WB) analysis of MMP-12 antibody (Cat.-No.: [AP20790PU-N]) in extracts from HepG2 cells.



Immunohistochemistry (IHC) analyzes of MMP-12 antibody (Cat.-No.: [AP20790PU-N]) in paraffin-embedded human lung carcinoma tissue.