

## Product datasheet for **AP20789PU-M**

### PGA3 Rabbit Polyclonal Antibody

#### Product data:

Product Type:	Primary Antibodies
Applications:	IHC, WB
Recommended Dilution:	<b>Western blot:</b> 1/500-1/1000. <b>Immunohistochemistry on Paraffin Sections:</b> 1/50-1/200.
Reactivity:	Human
Host:	Rabbit
Clonality:	Polyclonal
Immunogen:	Synthetic peptide, corresponding to amino acids 281-330 of Human Pepsin A.
Specificity:	This antibody detects endogenous levels of Pepsin protein. (region surrounding Met307)
Formulation:	Phosphate buffered saline (PBS), pH 7.2 State: Aff - Purified State: Liquid purified Ig fraction (> 95% pure by SDS-PAGE) Preservative: 0.05% Sodium Azide
Concentration:	1.0 mg/ml
Purification:	Affinity Chromatography using epitope-specific immunogen
Conjugation:	Unconjugated
Storage:	Store undiluted at 2-8°C for one month or (in aliquots) at -20°C for longer. Avoid repeated freezing and thawing.
Stability:	Shelf life: one year from despatch.
Predicted Protein Size:	~42 kDa
Gene Name:	pepsinogen 3, group I (pepsinogen A)
Database Link:	<a href="#">Entrez Gene 643847 Human</a> <a href="#">Entrez Gene 643834 Human</a> <a href="#">P0DJD8</a>



[View online »](#)

**Background:**

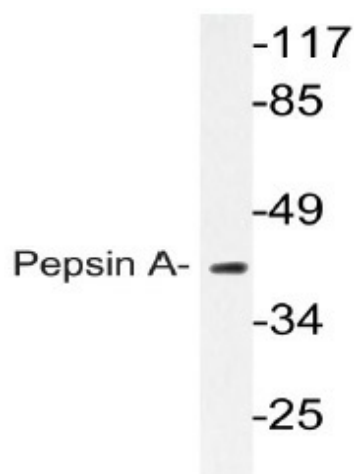
Pepsin is one of the main proteolytic enzymes secreted by the gastric mucosa. Pepsin consists of a single polypeptide chain and arises from its precursor, pepsinogen, by removal of a 41 amino acid segment from the N-terminus. Pepsinogen is synthesized in the stomach lining, and hydrochloric acid, also produced by the gastric mucosa, is necessary to convert the inactive enzyme and to maintain the optimum acidity (pH 1-3) for Pepsin function. Pepsin is particularly effective in cleaving peptide bonds involving aromatic amino acids. Pepsin shows extremely broad specificity; although bonds involving phenylalanine and leucine are preferred, many others are also cleaved to some extent. Pepsin A is a member of the subfamily A1 within the Pepsin family and is the predominant endopeptidase in the gastric juice of vertebrates. Pepsin A is inhibited by ovUS-1, a uterine Serpin.

**Synonyms:**

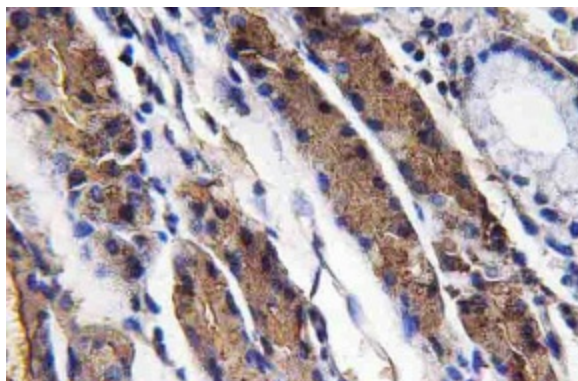
Pepsin A, PGA, pepsinogen 3 group I, pepsinogen 4 group I, pepsinogen 5 group I, Pepsinogen A, PGA3, PGA4, PGA5

**Protein Families:**

Druggable Genome

**Product images:**


Western blot analysis of Pepsin A antibody Cat.-No [AP20789PU-N] in extracts from K562 cells.



Immunohistochemistry analysis of Pepsin A antibody Cat.-No [AP20789PU-N] in paraffin-embedded human lung carcinoma tissue.