

Product datasheet for **AP20786PU-N**

Neurofilament (NEFL) Rabbit Polyclonal Antibody

Product data:

Product Type:	Primary Antibodies
Applications:	IHC
Recommended Dilution:	Immunohistochemistry on Paraffin sections 1/50-1/200.
Reactivity:	Human, Mouse, Rat
Host:	Rabbit
Clonality:	Polyclonal
Specificity:	This antibody detects endogenous levels of NF-L protein. (region surrounding Ile344)
Formulation:	Phosphate buffered saline (PBS), pH 7.2. State: Aff - Purified State: Liquid purified Ig fraction Preservative: 0.05% Sodium azide
Concentration:	1.0 mg/ml
Purification:	Affinity chromatography (> 95% (by SDS-PAGE)
Conjugation:	Unconjugated
Storage:	Store undiluted at 2-8°C for one month or (in aliquots) at -20°C for longer. Avoid repeated freezing and thawing.
Stability:	Shelf life: one year from despatch.
Predicted Protein Size:	~ 62 kDa
Gene Name:	neurofilament, light polypeptide
Database Link:	Entrez Gene 18039 Mouse Entrez Gene 83613 Rat Entrez Gene 4747 Human P07196



[View online »](#)

Background:

Neurofilament-L (for neurofilament light polypeptide, or NF-L), a member of the intermediate filament family, is a major component of neuronal cytoskeletons. Neurofilaments are dynamic structures; they contain phosphorylation sites for a large number of protein kinases, including protein kinase A, protein kinase C, cyclin-dependent kinase 5, extracellular signal regulated kinase, glycogen synthase kinase-3, and stress-activated protein kinase gamma. In addition to their role in the control of axon caliber, neurofilaments may affect other cytoskeletal elements, such as microtubules and actin filaments. Changes in neurofilament phosphorylation or metabolism are frequently observed in neurodegenerative diseases, including amyotrophic lateral sclerosis (ALS), Parkinson's disease, and Alzheimer's disease.

Synonyms:

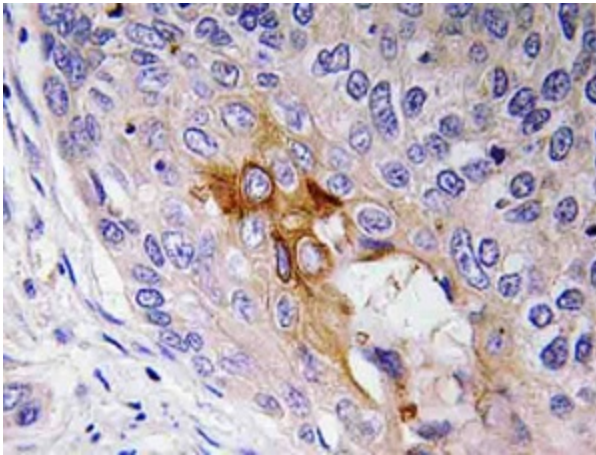
NF-L, NEFL, NF68, 68 kDa neurofilament protein

Protein Families:

Druggable Genome, ES Cell Differentiation/IPS

Protein Pathways:

Amyotrophic lateral sclerosis (ALS)

Product images:

Immunohistochemistry analysis of NF-L in human lung carcinoma tissue (Formalin-fixed, Paraffin-embedded) using Neurofilament L antibody (Cat.-No. AP20786PU-N).