

Product datasheet for **AP20785PU-M**

Angiotensin Converting Enzyme 2 (ACE2) Rabbit Polyclonal Antibody

Product data:

Product Type:	Primary Antibodies
Applications:	WB
Recommended Dilution:	Western blot: 1/500 - 1/1000.
Reactivity:	Human, Mouse
Host:	Rabbit
Clonality:	Polyclonal
Specificity:	This antibody detects endogenous levels of ACE2 protein. (region surrounding Lys465)
Formulation:	Phosphate buffered saline (PBS), pH 7.2. State: Aff - Purified State: Liquid purified Ig fraction Preservative: 0.05% sodium azide
Concentration:	1.0 mg/ml
Purification:	Affinity chromatography (> 95% (by SDS-PAGE)
Conjugation:	Unconjugated
Storage:	Store undiluted at 2-8°C for one month or (in aliquots) at -20°C for longer. Avoid repeated freezing and thawing.
Stability:	Shelf life: one year from despatch.
Predicted Protein Size:	~ 92 kDa
Gene Name:	angiotensin I converting enzyme 2
Database Link:	Entrez Gene 70008 Mouse Entrez Gene 59272 Human Q9BYF1

[View online »](#)

Background:

Angiotensin-converting enzyme (ACE) is a carboxylterminal dipeptidyl exopeptidase that converts Angiotensin I to the potent vasopressive hormone, Angiotensin II. There are two isoforms of ACE, the pulmonary ACEP and the testicular ACET. ACEP is a glycoprotein expressed in vascular endothelial cells of the lung, liver, adrenal cortex, pancreas, kidney and spleen. The ACET isoform is expressed exclusively in adult testis by developing sperm cells, specifically late pachytene spermatocytes. Additionally, ACE inactivates bradykinin, a vasodepressor peptide, and is involved in blood pressure regulation and fluid/ electrolyte homeostasis. ACE2 is the first known human homolog of angiotensin- converting enzyme (ACE). Unlike ACE, which is expressed ubiquitously throughout the vasculature, ACE2 is expressed only in cardiac, renal and testicular cells.

Synonyms:

Angiotensin-converting enzyme 2

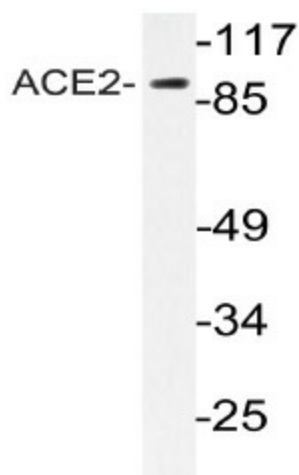
Protein Families:

Druggable Genome, Secreted Protein, Transmembrane

Protein Pathways:

Renin-angiotensin system

Product images:



Western blot (WB) analyzes of ACE2 antibody (Cat.-No.: [AP20785PU-N]) in extracts from HeLa cells.