

## Product datasheet for **AP20784PU-N**

### Semaphorin 3A (SEMA3A) Rabbit Polyclonal Antibody

#### Product data:

Product Type:	Primary Antibodies
Applications:	IHC
Recommended Dilution:	<b>Western Blot:</b> 1/500-1/1000. <b>Immunohistochemistry on Paraffin Sections:</b> 1/50-1/200.
Reactivity:	Human, Mouse, Rat
Host:	Rabbit
Clonality:	Polyclonal
Immunogen:	Synthetic peptide, corresponding to amino acids 702-756 of Human SEMA3A.
Specificity:	This antibody detects endogenous levels of SEMA3A protein. (region surrounding Pro737)
Formulation:	PBS, pH 7.2 State: Aff - Purified State: Liquid purified Ig fraction (> 95% pure by SDS-PAGE). Preservative: 0.05% Sodium Azide
Concentration:	1.0 mg/ml
Purification:	Affinity Chromatography using epitope-specific immunogen.
Conjugation:	Unconjugated
Storage:	Store undiluted at 2-8°C for one month or (in aliquots) at -20°C for longer. Avoid repeated freezing and thawing.
Stability:	Shelf life: one year from despatch.
Predicted Protein Size:	~89 kDa
Gene Name:	semaphorin 3A
Database Link:	<a href="#">Entrez Gene 10371 Human Q14563</a>



[View online »](#)

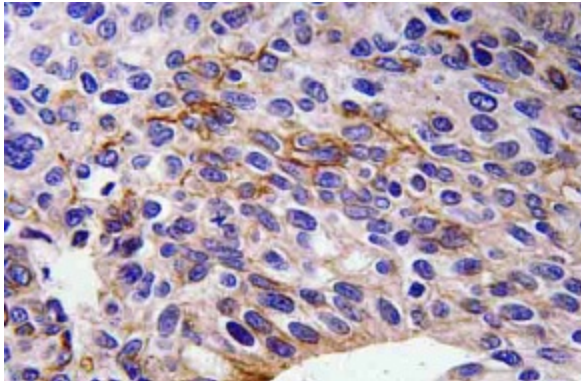
**Background:** Semaphorin 3A (Sema3A) may play a particularly interesting role in limiting axon regeneration since it is expressed in meningeal fibroblasts that invade the injured spinal cord and surround the glial scar. In addition, the Sema3A co receptors, Neuropilin 1 and Plexin A1, are expressed on axons that regenerate up to the injured region, but do not cross this Sema3A containing region. Thus, Sema3A and its co receptors may have important roles in regulating axon guidance during neuronal development and after neuronal injury.

**Synonyms:** Semaphorin-3A, Semaphorin III, Sema III, SEMAD

**Protein Families:** Secreted Protein

**Protein Pathways:** Axon guidance

**Product images:**



Immunohistochemistry (IHC) analyzes of SEMA3A antibody (Cat.-No.: AP20784PU-N) in paraffin-embedded human lung carcinoma tissue.