

## Product datasheet for **AP20783PU-M**

### IL16 Rabbit Polyclonal Antibody

#### Product data:

Product Type:	Primary Antibodies
Applications:	IHC
Recommended Dilution:	<b>Immunohistochemistry on paraffin sections</b> 1/50 - 1/200.
Reactivity:	Human
Host:	Rabbit
Clonality:	Polyclonal
Specificity:	This antibody detects endogenous levels of IL-16 protein. (region surrounding Gly97)
Formulation:	Phosphate buffered saline (PBS), pH 7.2. State: Aff - Purified State: Liquid purified Ig fraction Preservative: 0.05% sodium azide
Concentration:	1.0 mg/ml
Purification:	Affinity chromatography (> 95% (by SDS-PAGE)
Conjugation:	Unconjugated
Storage:	Store undiluted at 2-8°C for one month or (in aliquots) at -20°C for longer. Avoid repeated freezing and thawing.
Stability:	Shelf life: one year from despatch.
Gene Name:	interleukin 16
Database Link:	<a href="#">Entrez Gene 3603 Human</a> <a href="#">Q14005</a>



[View online »](#)

**Background:**

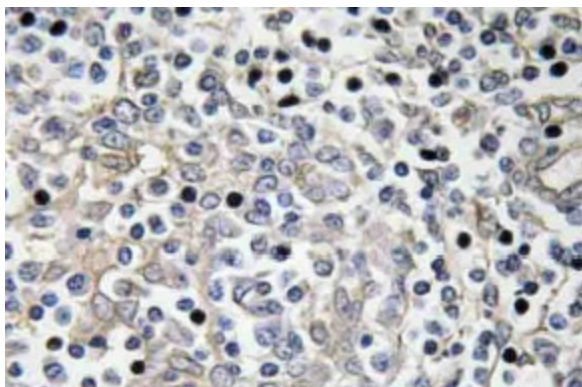
Cytokines are small, soluble proteins with pleiotropic effects on a variety of cell types. Cytokines have a regulatory function over the immune system and mediate aspects of inflammatory response. They exert their biological effects through the binding of membrane-bound receptors which, in turn, initiate signal transduction cascades that elicit physiological changes in their target cells. Interleukin-16, or IL-16, is a cytokine that has chemoattractant activity on CD4<sup>+</sup> T lymphocytes. It has long been known that eosinophils and CD4<sup>+</sup> T lymphocytes are recruited to sites of allergic inflammation, but the molecular mechanism was poorly understood. IL-16, also referred to as lymphocyte chemoattractant factor, is secreted by activated eosinophils as part of the allergic response along with RANTES, an additional cytokine. Once bound to its cognate receptor, CD4, IL-16 initiates a signal cascade that results in the activation of the PKC family.

**Synonyms:**

IL-16, LCF

**Protein Families:**

Druggable Genome, Secreted Protein

**Product images:**


Immunohistochemistry (IHC) analyzes of IL-16 antibody (Cat.-No. [AP20783PU-N]) in paraffin-embedded human tonsil tissue.