

## Product datasheet for **AP20782PU-S**

### 67kDa Laminin Receptor (RPSA) Rabbit Polyclonal Antibody

#### Product data:

Product Type:	Primary Antibodies
Applications:	IHC, WB
Recommended Dilution:	<b>Western blot:</b> 1/500 - 1/1000. <b>Immunohistochemistry on paraffin sections</b> 1/50 - 1/200.
Reactivity:	Human, Mouse, Rat
Host:	Rabbit
Clonality:	Polyclonal
Specificity:	This antibody detects endogenous levels of Laminin-R protein. (region surrounding Gln215)
Formulation:	Phosphate buffered saline (PBS), pH 7.2. State: Aff - Purified State: Liquid purified Ig fraction Preservative: 0.05% sodium azide
Concentration:	1.0 mg/ml
Purification:	Affinity chromatography (> 95% (by SDS-PAGE)
Conjugation:	Unconjugated
Storage:	Store undiluted at 2-8°C for one month or (in aliquots) at -20°C for longer. Avoid repeated freezing and thawing.
Stability:	Shelf life: one year from despatch.
Predicted Protein Size:	~ 40 kDa
Gene Name:	ribosomal protein SA
Database Link:	<a href="#">Entrez Gene 16785 Mouse</a> <a href="#">Entrez Gene 29236 Rat</a> <a href="#">Entrez Gene 3921 Human</a> <a href="#">P08865</a>



[View online »](#)

**Background:**

Laminin receptor (Laminin-R) has a heterodimeric structure similar to that of receptors for other extracellular matrix proteins such as Fibronectin and Vitronectin. Incorporation of Laminin-R into lysosomal membranes makes it possible for lysosomes to attach to surfaces coated with Laminin. This and other properties identify Laminin-R as a member of the integrin family of cell adhesion receptors. The Laminin-R precursor is a polypeptide whose expression is consistently upregulated in aggressive carcinoma. The precursor, which is also identified as p40 ribosome-associated protein, appears to be a multifunctional protein involved in the translational machinery. Laminin-R (also known as colon carcinoma Laminin-binding protein) is found at nine-fold higher levels in colon carcinoma than in adjacent normal colonic epithelium. Additionally, the level of the Laminin-R is higher in the lung cancer cell line than in the lung cell line.

**Synonyms:**

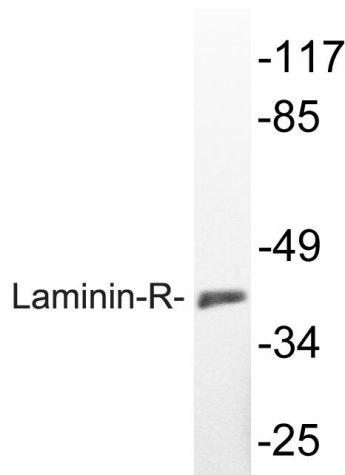
40S ribosomal protein SA, LAMBR, LAMR1, LamR, Laminin receptor 1, 37LRP, LRP/LR, 67LR, NEM/1CHD4

**Protein Families:**

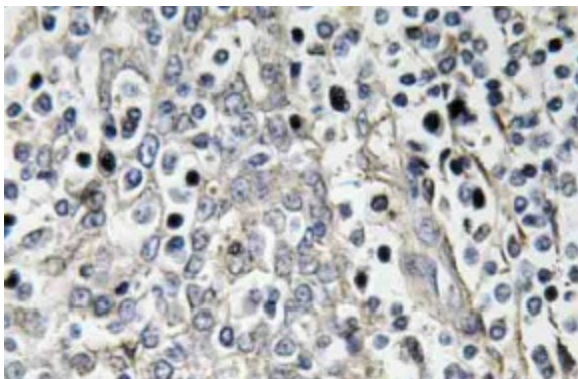
Druggable Genome

**Protein Pathways:**

Ribosome

**Product images:**


Western blot (WB) analyzes of Laminin-R antibody (Cat.-No.: [AP20782PU-N]) in extracts from K562 cells.



Immunohistochemistry (IHC) analyzes of Laminin-R antibody (Cat.-No.: [AP20782PU-N]) in paraffin-embedded human tonsil tissue.