

## Product datasheet for **AP20781PU-M**

### ASCL1 Rabbit Polyclonal Antibody

#### Product data:

Product Type:	Primary Antibodies
Applications:	IHC, WB
Recommended Dilution:	<b>Western blot:</b> 1/500-1/1000. <b>Immunohistochemistry on paraffin sections</b> 1/50-1/200.
Reactivity:	Human, Mouse, Rat
Host:	Rabbit
Clonality:	Polyclonal
Immunogen:	Synthetic peptide, corresponding to amino acids 140-190 of Human ASCL1.
Specificity:	This antibody detects endogenous levels of ASCL1 protein. (region surrounding Glu158)
Formulation:	Phosphate buffered saline (PBS), pH~7.2 State: Aff - Purified State: Liquid purified Ig fraction (> 95% pure by SDS-PAGE). Preservative: 0.05% Sodium Azide
Concentration:	1.0 mg/ml
Purification:	Affinity Chromatography using epitope-specific immunogen.
Conjugation:	Unconjugated
Storage:	Store undiluted at 2-8°C for one month or (in aliquots) at -20°C for longer. Avoid repeated freezing and thawing.
Stability:	Shelf life: one year from despatch.
Predicted Protein Size:	~25 kDa
Gene Name:	achaete-scute family bHLH transcription factor 1
Database Link:	<a href="#">Entrez Gene 17172 Mouse</a> <a href="#">Entrez Gene 64186 Rat</a> <a href="#">Entrez Gene 429 Human</a> <a href="#">P50553</a>

[View online »](#)

**Background:**

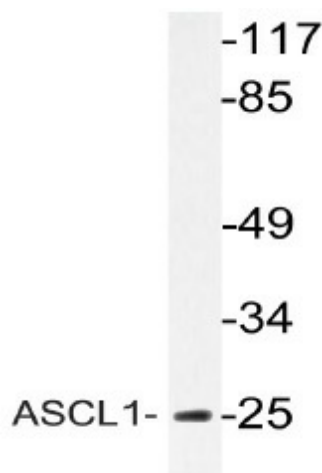
The mammalian homolog of the *Drosophila* protein achaetescute, ASCL1 (also known as ASH1) is a basic helix-loop-helix transcription factor that is required for early development of the nervous system. Expressed in fetal brain, ASCL1 is essential for the proper development of autonomic neurons and for the survival of subsets of autonomic neurons. ASCL1 interaction with MEF-2A may regulate the expression of specific genes that are critical for the formation of distinct neuronal circuits within the central nervous system. The high level of ASCL1 expression in neuroendocrine tumors, such as medullary thyroid cancer, small cell lung cancer and lung cancer with neuroendocrine features may provide a useful marker for cancers with neuroendocrine features. Mapping to human chromosome 12, the ASCL1 gene contains a trinucleotide repeat region, making this locus a candidate for inherited disease.

**Synonyms:**

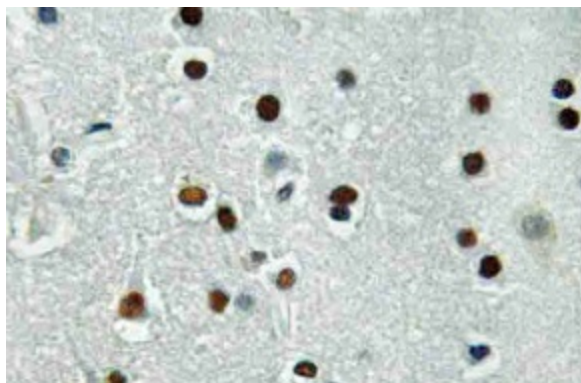
Achaete-scute homolog 1, ASH1, HASH1, MASH1

**Protein Families:**

Druggable Genome, Transcription Factors

**Product images:**


Western blot (WB) analyzes of ASCL1 antibody in extracts from Jurkat cells.



Immunohistochemistry (IHC) analyzes of ASCL1 antibody in paraffin-embedded human brain tissue.