

Product datasheet for **AP20779PU-M**

Caspase 4 (CASP4) Rabbit Polyclonal Antibody

Product data:

Product Type:	Primary Antibodies
Applications:	IHC, WB
Recommended Dilution:	Western blot: 1/500-1/1000. Immunohistochemistry on Paraffin Sections: 1/50-1/200.
Reactivity:	Human, Mouse, Rat
Host:	Rabbit
Clonality:	Polyclonal
Specificity:	This antibody detects endogenous levels of Caspase-4 protein. (region surrounding Glu124)
Formulation:	Phosphate buffered saline (PBS), pH~7.2 State: Aff - Purified State: Liquid purified Ig fraction (> 95% pure by SDS-PAGE) Preservative: 0.05% Sodium Azide
Concentration:	1.0 mg/ml
Purification:	Affinity Chromatography
Conjugation:	Unconjugated
Storage:	Store undiluted at 2-8°C for one month or (in aliquots) at -20°C for longer. Avoid repeated freezing and thawing.
Stability:	Shelf life: one year from despatch.
Predicted Protein Size:	~34 kDa
Gene Name:	caspase 4
Database Link:	<u>Entrez Gene 12363 Mouse</u> <u>Entrez Gene 114555 Rat</u> <u>Entrez Gene 837 Human</u> <u>P49662</u>



[View online »](#)

Background:

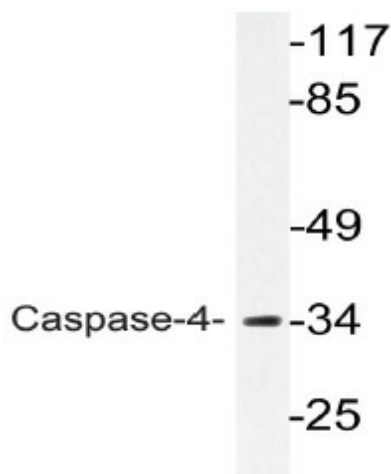
A unique family of cysteine proteases has been described that differs in sequence, structure and substrate specificity from any previously described protease family. This family, termed Ced-3/caspase-1, is comprised of caspase-1, caspase-2, caspase-3, caspase-4, caspase-6 and caspase-7 (also designated Mch3, ICE-LAP3 or CMH-1), caspase-9, and caspase-10. Ced-3/caspase-1 family members function as key components of the apoptotic machinery and act to destroy specific target proteins which are critical to cellular longevity. Poly(ADP-ribose) polymerase plays an integral role in surveying for DNA mutations and double strand breaks. Caspase-3, caspase-7 and caspase-9, but not caspase-1, have been shown to cleave the 112 kDa nuclear protein PARP into an 85 kDa apoptotic fragment. Caspase-6, but not caspase-3, has been shown to cleave the nuclear lamins which are critical to maintaining the integrity of the nuclear envelope and cellular morphology. Caspase-10 has been shown to activate caspase-3 and caspase-7 in response to apoptotic stimuli.

Synonyms:

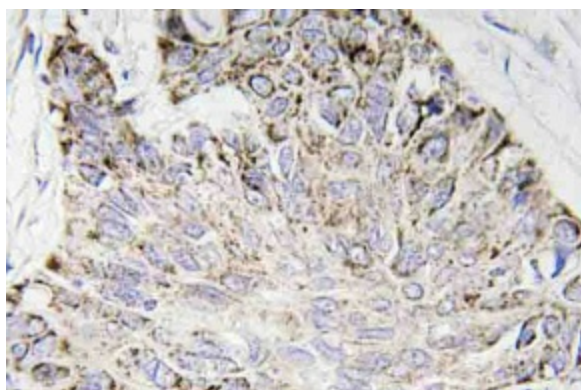
CASP4, ICH2, ICE(rel)-II, Protease ICH-2, Protease TX

Protein Families:

Druggable Genome, Protease

Product images:


Western blot (WB) analyzes of Caspase-4 antibody (Cat.-No.: [AP20779PU-N]) in extracts from K562 cells.



Immunohistochemistry (IHC) analyzes of Caspase-4 antibody (Cat.-No.: [AP20779PU-N]) in paraffin-embedded human lung carcinoma tissue.