

## Product datasheet for **AP20778PU-S**

### **Pepsinogen II (PGC) Rabbit Polyclonal Antibody**

#### **Product data:**

|                         |   |
|-------------------------|---|
| Product Type:           | Primary Antibodies  |
| Applications:           | IHC, WB   |
| Recommended Dilution:   | <b>Western blot:</b> 1/500 - 1/1000.<br><b>Immunohistochemistry on paraffin sections</b> 1/50 - 1/200.                                      |
| Reactivity:             | Human   |
| Host:                   | Rabbit  |
| Clonality:              | Polyclonal  |
| Specificity:            | This antibody detects endogenous levels of Pepsin C protein.<br>(region surrounding Phe306)   |
| Formulation:            | Phosphate buffered saline (PBS), pH 7.2.<br>State: Aff - Purified<br>State: Liquid purified Ig fraction<br>Preservative: 0.05% sodium azide |
| Concentration:          | 1.0 mg/ml   |
| Purification:           | Affinity chromatography (> 95% (by SDS-PAGE)  |
| Conjugation:            | Unconjugated  |
| Storage:                | Store undiluted at 2-8°C for one month or (in aliquots) at -20°C for longer.<br>Avoid repeated freezing and thawing.                        |
| Stability:              | Shelf life: one year from despatch.   |
| Predicted Protein Size: | ~ 42 kDa  |
| Gene Name:              | progastricsin (pepsinogen C)  |
| Database Link:          | <a href="#">Entrez Gene 5225 Human P20142</a>   |



[View online »](#)

**Background:**

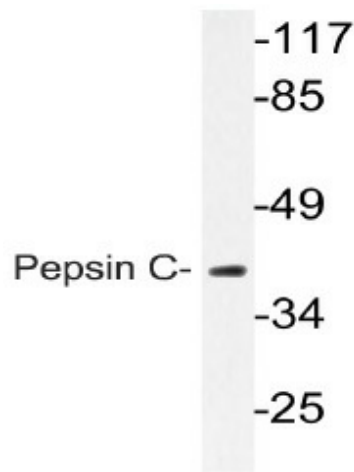
Pepsin is one of the main proteolytic enzymes secreted by the gastric mucosa. Pepsin consists of a single polypeptide chain and arises from its precursor, Pepsinogen, by removal of a 41 amino acid segment from the amino end. Pepsinogen is synthesized in the stomach lining; hydrochloric acid, also produced by the gastric mucosa, is necessary to convert the inactive enzyme and to maintain the optimum acidity (pH 1-3) for Pepsin function. Pepsin is particularly effective in cleaving peptide bonds involving aromatic amino acids. It shows extremely broad specificity, and although bonds involving phenylalanine and leucine are preferred, many others are also cleaved to some extent. The amino acid composition of Pepsin C differs from those of Pepsinogen and Pepsin, especially in the content of basic amino acids, glutamic acid, aspartic acid, leucine and isoleucine.

**Synonyms:**

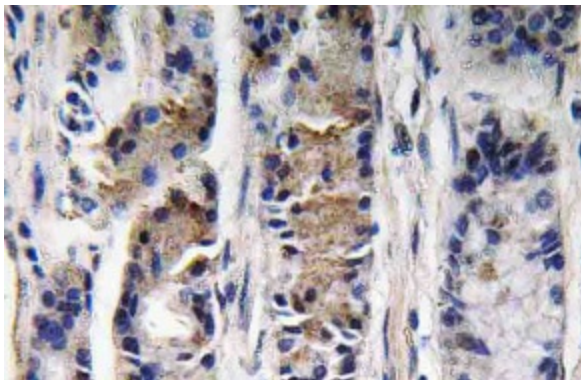
Pepsinogen C, Progastricsin, Gastricsin, PGC

**Protein Families:**

Protease, Secreted Protein

**Product images:**

Western blot (WB) analyzes of Pepsin C antibody (Cat.-No.: [AP20778PU-N]) in extracts from Jurkat cells.



Immunohistochemistry (IHC) analyzes of Pepsin C antibody (Cat.-No.: [AP20778PU-N]) in paraffin-embedded human lung carcinoma tissue.