

Product datasheet for **AP20778PU-M**

Pepsinogen II (PGC) Rabbit Polyclonal Antibody

Product data:

Product Type:	Primary Antibodies
Applications:	IHC, WB
Recommended Dilution:	Western blot: 1/500 - 1/1000. Immunohistochemistry on paraffin sections 1/50 - 1/200.
Reactivity:	Human
Host:	Rabbit
Clonality:	Polyclonal
Specificity:	This antibody detects endogenous levels of Pepsin C protein. (region surrounding Phe306)
Formulation:	Phosphate buffered saline (PBS), pH 7.2. State: Aff - Purified State: Liquid purified Ig fraction Preservative: 0.05% sodium azide
Concentration:	1.0 mg/ml
Purification:	Affinity chromatography (> 95% (by SDS-PAGE)
Conjugation:	Unconjugated
Storage:	Store undiluted at 2-8°C for one month or (in aliquots) at -20°C for longer. Avoid repeated freezing and thawing.
Stability:	Shelf life: one year from despatch.
Predicted Protein Size:	~ 42 kDa
Gene Name:	progastricsin (pepsinogen C)
Database Link:	<u>Entrez Gene 5225 Human P20142</u>



[View online »](#)

Background:

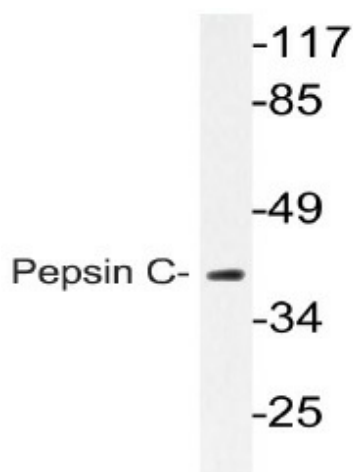
Pepsin is one of the main proteolytic enzymes secreted by the gastric mucosa. Pepsin consists of a single polypeptide chain and arises from its precursor, Pepsinogen, by removal of a 41 amino acid segment from the amino end. Pepsinogen is synthesized in the stomach lining; hydrochloric acid, also produced by the gastric mucosa, is necessary to convert the inactive enzyme and to maintain the optimum acidity (pH 1-3) for Pepsin function. Pepsin is particularly effective in cleaving peptide bonds involving aromatic amino acids. It shows extremely broad specificity, and although bonds involving phenylalanine and leucine are preferred, many others are also cleaved to some extent. The amino acid composition of Pepsin C differs from those of Pepsinogen and Pepsin, especially in the content of basic amino acids, glutamic acid, aspartic acid, leucine and isoleucine.

Synonyms:

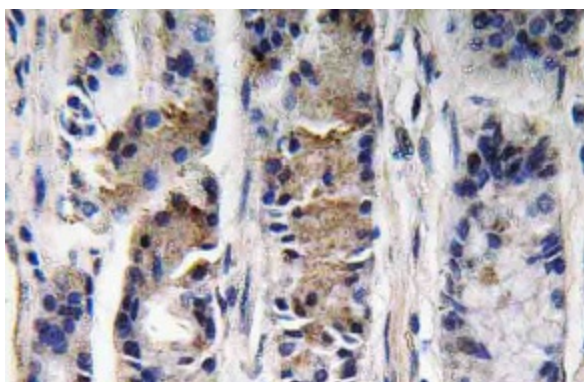
Pepsinogen C, Progastricsin, Gastricsin, PGC

Protein Families:

Protease, Secreted Protein

Product images:


Western blot (WB) analyzes of Pepsin C antibody (Cat.-No.: [AP20778PU-N]) in extracts from Jurkat cells.



Immunohistochemistry (IHC) analyzes of Pepsin C antibody (Cat.-No.: [AP20778PU-N]) in paraffin-embedded human lung carcinoma tissue.