

## Product datasheet for **AP20777PU-N**

### TRAF6 Rabbit Polyclonal Antibody

#### Product data:

Product Type:	Primary Antibodies
Applications:	IHC, WB
Recommended Dilution:	<b>Western blot:</b> 1/500 - 1/1000. <b>Immunohistochemistry on paraffin sections</b> 1/50 - 1/200.
Reactivity:	Human, Mouse, Rat
Host:	Rabbit
Clonality:	Polyclonal
Specificity:	This antibody detects endogenous levels of Mfn2 protein. (region surrounding His154)
Formulation:	Phosphate buffered saline (PBS), pH 7.2. State: Aff - Purified State: Liquid purified Ig fraction Preservative: 0.05% sodium azide
Concentration:	1.0 mg/ml
Purification:	Affinity chromatography (> 95% (by SDS-PAGE)
Conjugation:	Unconjugated
Storage:	Store undiluted at 2-8°C for one month or (in aliquots) at -20°C for longer. Avoid repeated freezing and thawing.
Stability:	Shelf life: one year from despatch.
Predicted Protein Size:	~ 58 kDa
Gene Name:	TNF receptor associated factor 6
Database Link:	<a href="#">Entrez Gene 22034 Mouse</a> <a href="#">Entrez Gene 311245 Rat</a> <a href="#">Entrez Gene 7189 Human</a> <a href="#">Q9Y4K3</a>



[View online »](#)

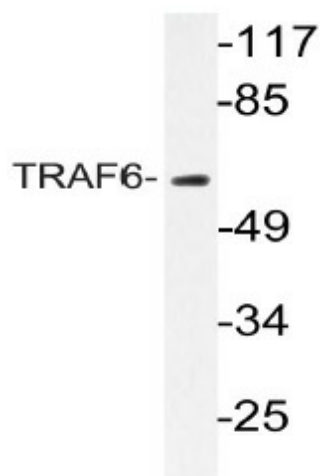
**Background:** Tumor necrosis factor receptor-associated factor 6 (TRAF6) regulates adaptive immunity, innate immunity and bone metabolism. TRAF6 is a ubiquitin (Ub) ligase that mediates the activation of protein kinases, such as transforming growth factor beta-activated kinase (TAK1) and I $\kappa$ B kinase (IKK), by catalyzing the formation of a unique polyubiquitin chain linked through Lys 63 of Ub. TRAF6 is essential for activating NF $\kappa$ B signaling pathway in response to interleukin-1 and Toll-like receptor ligands. The coiled-coil domain of TRAF6 is essential for its auto-ubiquitination and activating NF $\kappa$ B signaling pathway. TRAF6 interacts with various protein kinases including IRAK1/IRAK, SRC and PKC $\zeta$ , which provides a link between distinct signaling pathways.

**Synonyms:** TNF receptor-associated factor 6

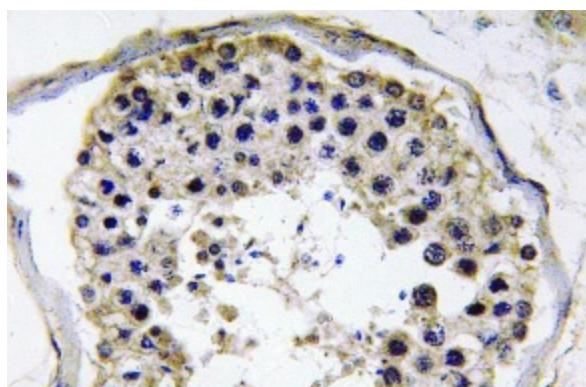
**Protein Families:** Druggable Genome

**Protein Pathways:** Endocytosis, MAPK signaling pathway, Neurotrophin signaling pathway, NOD-like receptor signaling pathway, Pathways in cancer, RIG-I-like receptor signaling pathway, Small cell lung cancer, Toll-like receptor signaling pathway, Ubiquitin mediated proteolysis

### Product images:



Western blot (WB) analyzes of TRAF6 antibody (Cat.-No.: AP20777PU-N) in extracts from HeLa cells.



Immunohistochemistry (IHC) analyzes of TRAF6 antibody (Cat.-No.: AP20777PU-N) in paraffin-embedded human testis tissue.