

## Product datasheet for **AP20775PU-N**

### Mitofusin 2 (MFN2) Rabbit Polyclonal Antibody

#### Product data:

Product Type:	Primary Antibodies
Applications:	IHC, WB
Recommended Dilution:	<b>Western blot:</b> 1/500-1/1000. <b>Immunohistochemistry on paraffin sections</b> 1/50-1/200.
Reactivity:	Human, Mouse, Rat
Host:	Rabbit
Clonality:	Polyclonal
Specificity:	This antibody detects endogenous levels of Mfn2 protein. (region surrounding Phe403)
Formulation:	Phosphate buffered saline (PBS), pH 7.2. State: Aff - Purified State: Liquid purified Ig fraction Preservative: 0.05% sodium azide
Concentration:	1.0 mg/ml
Purification:	Affinity chromatography (> 95% (by SDS-PAGE)
Conjugation:	Unconjugated
Storage:	Store undiluted at 2-8°C for one month or (in aliquots) at -20°C for longer. Avoid repeated freezing and thawing.
Stability:	Shelf life: one year from despatch.
Predicted Protein Size:	~ 86 kDa
Gene Name:	mitofusin 2
Database Link:	<u><a href="#">Entrez Gene 64476 Rat</a></u> <u><a href="#">Entrez Gene 170731 Mouse</a></u> <u><a href="#">Entrez Gene 9927 Human</a></u> <u><a href="#">O95140</a></u>



[View online »](#)

**Background:**

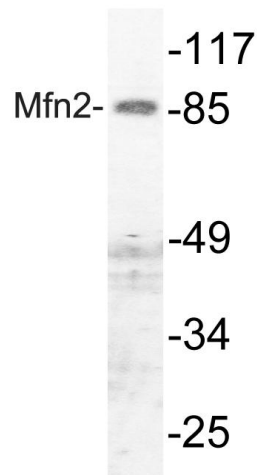
MFN2 is an essential transmembrane GTPase which mediates mitochondrial fusion. Fusion of mitochondria occurs in many cell types and constitutes an important step in mitochondria morphology, which is balanced between fusion and fission. MFN2 acts independently of the cytoskeleton, plays a central role in mitochondrial metabolism and may be associated with obesity and/or apoptosis processes. Overexpression induces the formation of mitochondrial networks. It plays an important role in the regulation of vascular smooth muscle cell proliferation. Defects in MFN2 lead to Charcot-Marie-Tooth disease, the most common inherited disorder of the peripheral nervous system.

**Synonyms:**

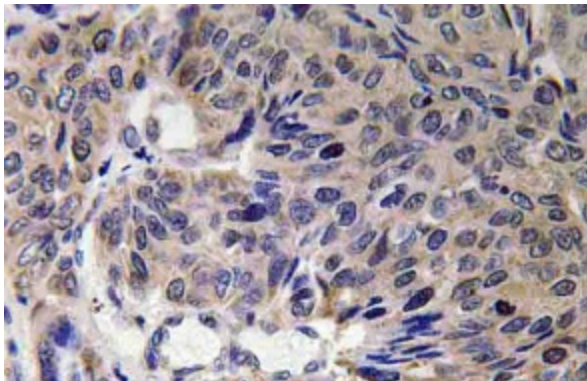
MFN2, CPRP1, KIAA0214

**Protein Families:**

Transmembrane

**Product images:**


Western blot (WB) analysis of Mfn2 antibody (Cat.-No.: AP20775PU-N) in extracts from HuvEc cells.



Immunohistochemistry (IHC) analyzes of Mfn2 antibody (Cat.-No.: AP20775PU-N) in paraffin-embedded human lung carcinoma tissue.