

Product datasheet for **AP20774PU-N**

Haptoglobin (HP) Rabbit Polyclonal Antibody

Product data:

| | |
|-------------------------|--|
| Product Type: | Primary Antibodies |
| Applications: | IHC |
| Recommended Dilution: | Immunohistochemistry on paraffin sections: 1/50 - 1/200. |
| Reactivity: | Human |
| Host: | Rabbit |
| Clonality: | Polyclonal |
| Specificity: | This antibody detects endogenous levels of Haptoglobin protein. (region surrounding Val328) |
| Formulation: | Phosphate buffered saline (PBS), pH 7.2 State: Aff - Purified State: Liquid purified Ig fraction Preservative: 0.05% sodium azide |
| Concentration: | 1.0 mg/ml |
| Purification: | Affinity chromatography (> 95% (by SDS-PAGE) |
| Conjugation: | Unconjugated |
| Storage: | Store undiluted at 2-8°C for one month or (in aliquots) at -20°C for longer. Avoid repeated freezing and thawing. |
| Stability: | Shelf life: one year from despatch. |
| Predicted Protein Size: | ~ 45 kDa |
| Gene Name: | haptoglobin |
| Database Link: | Entrez Gene 3240 Human P00738 |



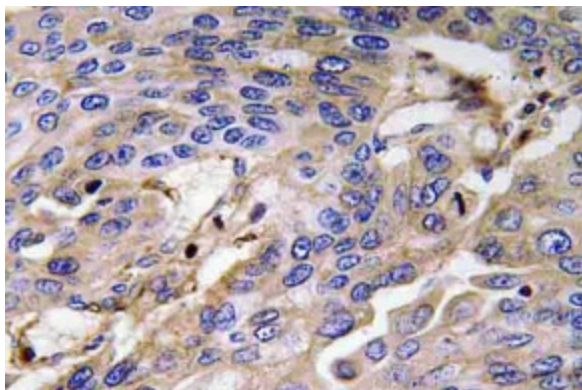
[View online »](#)

Background: Haptoglobin (Hp) is a blood plasma protein that functions to bind free Hemoglobin that has been released from erythrocytes, thereby inhibiting its oxidative activity. During this process, Haptoglobin sequesters the iron within Hemoglobin, preventing iron-utilizing bacteria from benefitting from hemolysis. This function suggests that Haptoglobin concentrations may increase in response to inflammation. The resulting Haptoglobin-Hemoglobin complex is then removed by the reticulo-endothelial system. Due to cleavage of a common precursor protein during protein synthesis, Haptoglobin consists of two α and two β chains, connected by disulfide bridges.

Synonyms: BP; haptoglobin; HP2-ALPHA-2; HPA1S; MGC111141

Protein Families: Druggable Genome, Protease, Secreted Protein, Transmembrane

Product images:



Immunohistochemistry (IHC) analyzes of Haptoglobin antibody (Cat.-No.: AP20774PU-N) in paraffin-embedded human lung carcinoma tissue.