

Product datasheet for **AP20771PU-M**

BMP8B Rabbit Polyclonal Antibody

Product data:

Product Type:	Primary Antibodies
Applications:	IHC
Recommended Dilution:	Western blot: 1/500 - 1/1000. Immunohistochemistry on paraffin sections 1/50 - 1/200.
Reactivity:	Human
Host:	Rabbit
Clonality:	Polyclonal
Specificity:	This antibody detects endogenous levels of BMP-8 protein. (region surrounding Glu90)
Formulation:	Phosphate buffered saline (PBS), pH 7.2. State: Aff - Purified State: Liquid purified Ig fraction Preservative: 0.05% sodium azide
Concentration:	1.0 mg/ml
Purification:	Affinity chromatography (> 95% (by SDS-PAGE)
Conjugation:	Unconjugated
Storage:	Store undiluted at 2-8°C for one month or (in aliquots) at -20°C for longer. Avoid repeated freezing and thawing.
Stability:	Shelf life: one year from despatch.
Gene Name:	bone morphogenetic protein 8b
Database Link:	Entrez Gene 656 Human P34820



[View online »](#)

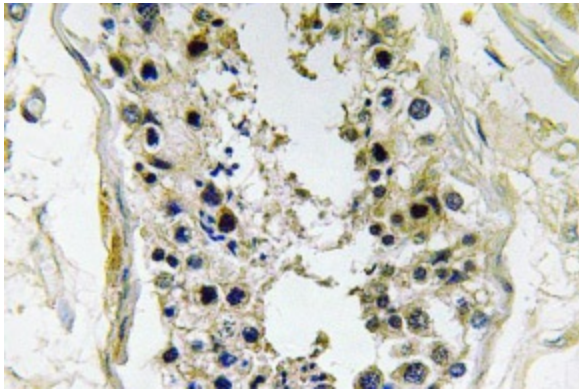
Background: Bone morphogenic proteins (BMPs) are members of the TGFbeta superfamily. BMPs are involved in the induction of cartilage and bone formation. In vivo studies have shown that BMP-2 (also designated BMP-2A) and BMP-3 can independently induce cartilage formation. Smad3 association with the TGFbeta receptor complex and Smad1 translocation to the nucleus are observed after the addition of BMP-4 (also designated BMP-2B), suggesting that BMP-4 may play a role in activation of the Smad pathway. BMP-5, BMP-6 and BMP-7 all share high sequence homology with BMP-2, indicating that they each may be able to induce cartilage formation. BMP-8 is thought to be involved in early development, as detectable expression has not been found in adult organs. Two BMP-8 proteins exist, namely BMP-8A and BMP-8B (also designated OP-2), and are encoded by two distinct genes.

Synonyms: Bone morphogenetic protein 8B, BMP-8B, OP2, Osteogenic protein 2

Protein Families: Adult stem cells, Cancer stem cells, Druggable Genome, Embryonic stem cells, ES Cell Differentiation/IPS, Induced pluripotent stem cells, Secreted Protein, Stem cell relevant signaling - TGFb/BMP signaling pathway

Protein Pathways: Hedgehog signaling pathway, TGF-beta signaling pathway

Product images:



Immunohistochemistry (IHC) analyzes of BMP-8 antibody (Cat.-No.: [AP20771PU-N]) in paraffin-embedded human testis tissue.