

## Product datasheet for **AP20770PU-M**

### IL32 Rabbit Polyclonal Antibody

#### Product data:

Product Type:	Primary Antibodies
Applications:	IHC, WB
Recommended Dilution:	<b>Western blot:</b> 1/500 - 1/1000. <b>Immunohistochemistry on paraffin sections</b> 1/50 - 1/200.
Reactivity:	Human
Host:	Rabbit
Clonality:	Polyclonal
Specificity:	This antibody detects endogenous levels of IL-32 protein. (region surrounding Lys226)
Formulation:	Phosphate buffered saline (PBS), pH 7.2. State: Aff - Purified State: Liquid purified Ig fraction Preservative: 0.05% sodium azide
Concentration:	1.0 mg/ml
Purification:	Affinity chromatography (> 95% (by SDS-PAGE)
Conjugation:	Unconjugated
Storage:	Store undiluted at 2-8°C for one month or (in aliquots) at -20°C for longer. Avoid repeated freezing and thawing.
Stability:	Shelf life: one year from despatch.
Predicted Protein Size:	~ 27 kDa
Gene Name:	interleukin 32
Database Link:	<u><a href="#">Entrez Gene 9235 Human P24001</a></u>



[View online »](#)

**Background:**

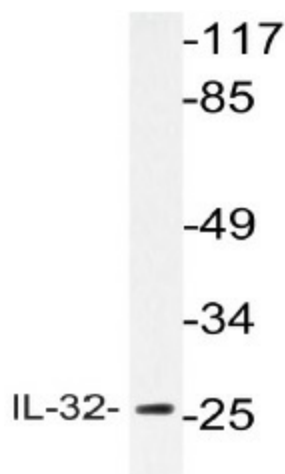
The interleukins make up a large family of well characterized cytokines, primarily of hematopoietic cell origin. The interleukins are secreted by immune cells (mainly macrophages, B cells and T cells) that regulate a wide range of immune system functions. Interleukin-32 (IL-32), also designated Natural Killer (NK) cell transcript 4 (nk4), may play a role in inflammatory responses such as lymphocyte activation. IL-32 is secreted following stimulation with inflammatory cytokines such as IL-1beta and IFN-gamma, and by NK cells after exposure to IL-12 and IL-18. It also induces production of IL-1beta, TNFalpha, MIP-2 and IL-6. Expression of IL-32 increases after activation of T cells by mitogens or activation of NK cells by IL-2. The IL-32 protein contains three potential Nmyristoylation sites, a tyrosine sulfation site, an RGD cellattachment sequence and multiple putative phosphorylation sites. Human IL-32 exists as four isoforms.

**Synonyms:**

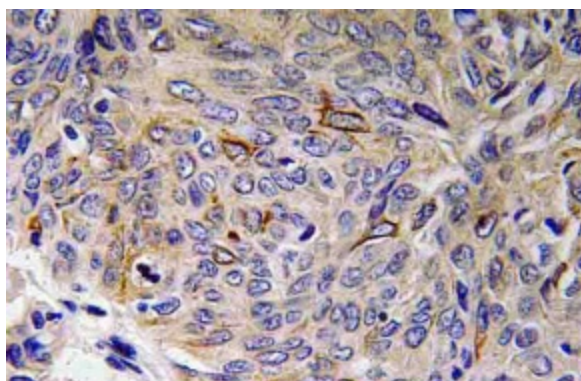
IL-32, NK4, TAIF

**Protein Families:**

Secreted Protein

**Product images:**


Western blot (WB) analyzes of IL-32 antibody (Cat.-No.: [AP20770PU-N]) in extracts from HepG2 cells.



Immunohistochemistry (IHC) analyzes of IL-32 antibody (Cat.-No.: [AP20770PU-N]) in paraffin-embedded human lung carcinoma tissue.