

## Product datasheet for **AP20768PU-S**

### **BMP7 Rabbit Polyclonal Antibody**

#### **Product data:**

Product Type:	Primary Antibodies
Applications:	IHC, WB
Recommended Dilution:	<b>Western blot:</b> 1/500 - 1/1000. <b>Immunohistochemistry on Paraffin Sections:</b> 1/50-1/200.
Reactivity:	Human, Mouse, Rat
Host:	Rabbit
Clonality:	Polyclonal
Immunogen:	Synthetic peptide coresponding aa 140-190 of human BMP7
Specificity:	This antibody detects endogenous levels of BMP-7 protein. (region surrounding Glu173)
Formulation:	Phosphate buffered saline (PBS), pH~7.2 State: Aff - Purified State: Liquid purified Ig fraction (> 95% pure by SDS-PAGE) Preservative: 0.05% Sodium Azide
Concentration:	1.0 mg/ml
Purification:	Affinity Chromatography using epitope-specific immunogen
Conjugation:	Unconjugated
Storage:	Store undiluted at 2-8°C for one month or (in aliquots) at -20°C for longer. Avoid repeated freezing and thawing.
Stability:	Shelf life: one year from despatch.
Predicted Protein Size:	~ 49 kDa
Gene Name:	bone morphogenetic protein 7
Database Link:	<u><a href="#">Entrez Gene 12162 Mouse</a></u> <u><a href="#">Entrez Gene 85272 Rat</a></u> <u><a href="#">Entrez Gene 655 Human P18075</a></u>



[View online »](#)

**Background:**

Bone morphogenic proteins (BMPs) are members of the TGFbeta superfamily. BMPs are involved in the induction of cartilage and bone formation. In vivo studies have shown that BMP-2 (also designated BMP-2A) and BMP-3 can independently induce cartilage formation. Smad3 association with the TGFbeta receptor complex and Smad1 translocation to the nucleus are observed after the addition of BMP-4 (also designated BMP-2B), suggesting that BMP-4 may play a role in activation of the Smad pathway. BMP-5, BMP-6 and BMP-7 all share high sequence homology with BMP-2, indicating that they each may be able to induce cartilage formation. BMP-8 (also designated OP-2) is thought to be involved in early development, as detectable expression has not been found in adult organs.

**Synonyms:**

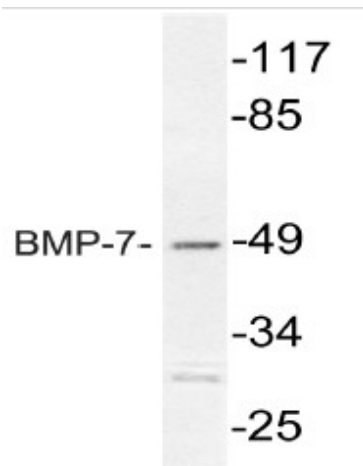
BMP-7, Bone morphogenetic protein 7, OP1, Osteogenic protein 1

**Protein Families:**

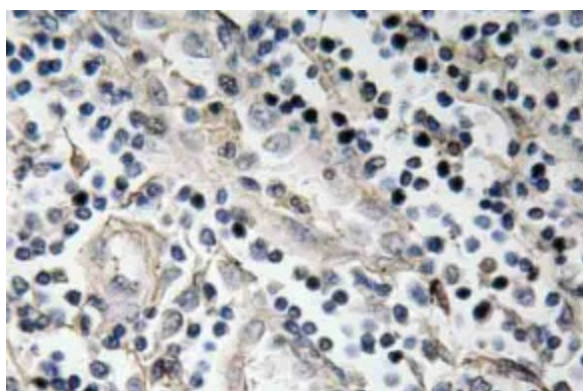
Adult stem cells, Cancer stem cells, Druggable Genome, Embryonic stem cells, ES Cell Differentiation/IPS, Induced pluripotent stem cells, Secreted Protein, Stem cell relevant signaling - TGFb/BMP signaling pathway

**Protein Pathways:**

Cytokine-cytokine receptor interaction, Hedgehog signaling pathway, TGF-beta signaling pathway

**Product images:**

Western blot (WB) analysis of BMP-7 antibody in extracts from Jurkat cells



Immunohistochemistry (IHC) analyzes of BMP-7 antibody in paraffin-embedded human tonsil tissue.