

Product datasheet for **AP20768PU-M**

BMP7 Rabbit Polyclonal Antibody

Product data:

| | |
|-------------------------|---------------------------------------------------------------------------------------------------------------------------------------------------------------------------|
| Product Type: | Primary Antibodies |
| Applications: | IHC, WB |
| Recommended Dilution: | Western blot: 1/500 - 1/1000. Immunohistochemistry on Paraffin Sections: 1/50-1/200. |
| Reactivity: | Human, Mouse, Rat |
| Host: | Rabbit |
| Clonality: | Polyclonal |
| Immunogen: | Synthetic peptide coresponding aa 140-190 of human BMP7 |
| Specificity: | This antibody detects endogenous levels of BMP-7 protein. (region surrounding Glu173) |
| Formulation: | Phosphate buffered saline (PBS), pH~7.2 State: Aff - Purified State: Liquid purified Ig fraction (> 95% pure by SDS-PAGE) Preservative: 0.05% Sodium Azide |
| Concentration: | 1.0 mg/ml |
| Purification: | Affinity Chromatography using epitope-specific immunogen |
| Conjugation: | Unconjugated |
| Storage: | Store undiluted at 2-8°C for one month or (in aliquots) at -20°C for longer. Avoid repeated freezing and thawing. |
| Stability: | Shelf life: one year from despatch. |
| Predicted Protein Size: | ~ 49 kDa |
| Gene Name: | bone morphogenetic protein 7 |
| Database Link: | <u>Entrez Gene 12162 Mouse</u> <u>Entrez Gene 85272 Rat</u> <u>Entrez Gene 655 Human</u> <u>P18075</u> |



[View online »](#)

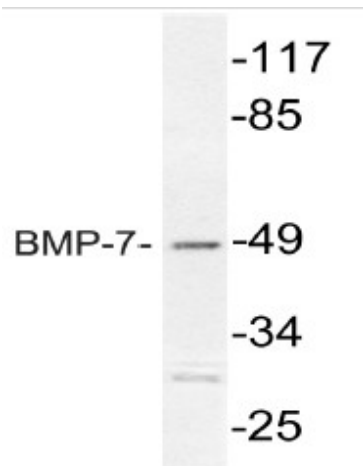
Background: Bone morphogenic proteins (BMPs) are members of the TGFbeta superfamily. BMPs are involved in the induction of cartilage and bone formation. In vivo studies have shown that BMP-2 (also designated BMP-2A) and BMP-3 can independently induce cartilage formation. Smad3 association with the TGFbeta receptor complex and Smad1 translocation to the nucleus are observed after the addition of BMP-4 (also designated BMP-2B), suggesting that BMP-4 may play a role in activation of the Smad pathway. BMP-5, BMP-6 and BMP-7 all share high sequence homology with BMP-2, indicating that they each may be able to induce cartilage formation. BMP-8 (also designated OP-2) is thought to be involved in early development, as detectable expression has not been found in adult organs.

Synonyms: BMP-7, Bone morphogenetic protein 7, OP1, Osteogenic protein 1

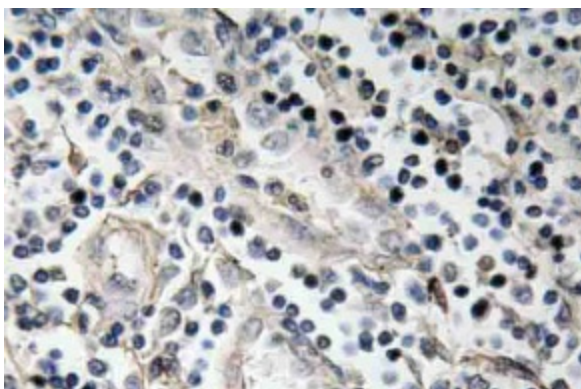
Protein Families: Adult stem cells, Cancer stem cells, Druggable Genome, Embryonic stem cells, ES Cell Differentiation/IPS, Induced pluripotent stem cells, Secreted Protein, Stem cell relevant signaling - TGFb/BMP signaling pathway

Protein Pathways: Cytokine-cytokine receptor interaction, Hedgehog signaling pathway, TGF-beta signaling pathway

Product images:



Western blot (WB) analysis of BMP-7 antibody in extracts from Jurkat cells



Immunohistochemistry (IHC) analyzes of BMP-7 antibody in paraffin-embedded human tonsil tissue.