

## Product datasheet for **AP20767PU-M**

### Cathepsin D (CTSD) Rabbit Polyclonal Antibody

#### Product data:

Product Type:	Primary Antibodies
Applications:	IHC, WB
Recommended Dilution:	<b>Western blot:</b> 1/500 - 1/1000. <b>Immunohistochemistry on paraffin sections</b> 1/50 - 1/200.
Reactivity:	Human
Host:	Rabbit
Clonality:	Polyclonal
Specificity:	This antibody detects endogenous levels of Cathepsin D protein. (region surrounding Lys345)
Formulation:	Phosphate buffered saline (PBS), pH 7.2. State: Aff - Purified State: Liquid purified Ig fraction Preservative: 0.05% sodium azide
Concentration:	1.0 mg/ml
Purification:	Affinity chromatography (> 95% (by SDS-PAGE)
Conjugation:	Unconjugated
Storage:	Store undiluted at 2-8°C for one month or (in aliquots) at -20°C for longer. Avoid repeated freezing and thawing.
Stability:	Shelf life: one year from despatch.
Predicted Protein Size:	~ 45 kDa
Gene Name:	cathepsin D
Database Link:	<a href="#">Entrez Gene 1509 Human P07339</a>



[View online »](#)

**Background:**

The cathepsin family of proteolytic enzymes contains several diverse classes of proteases. The cysteine protease class comprises cathepsins B, L, H, K, S, and O. The aspartyl protease class is composed of cathepsins D and E. Cathepsin G is in the serine protease class. Most cathepsins are lysosomal and each is involved in cellular metabolism, participating in various events such as peptide biosynthesis and protein degradation. Cathepsins may also cleave some protein precursors, thereby releasing regulatory peptides. The promoter region of the cathepsin D gene contains five Sp1 binding sites and four AP-2 binding sites.

**Synonyms:**

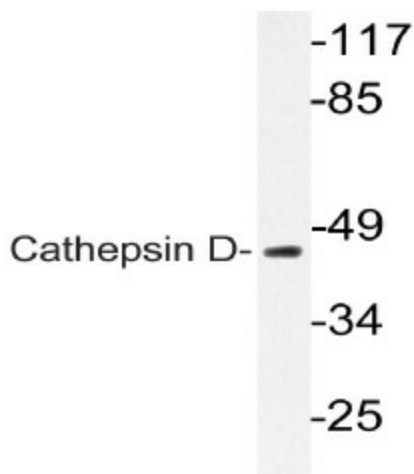
CTSD, CPSD

**Protein Families:**

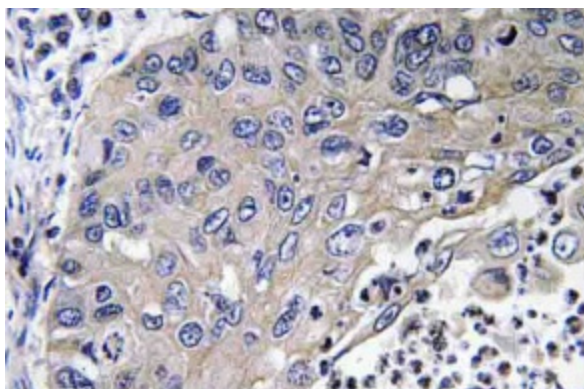
Druggable Genome, Protease

**Protein Pathways:**

Lysosome

**Product images:**


Western blot (WB) analyzes of Cathepsin D antibody (Cat.-No.: [AP20767PU-N]) in extracts from HepG2 cells.



Immunohistochemistry (IHC) analyzes of Cathepsin D antibody (Cat.-No.: [AP20767PU-N]) in paraffin-embedded human lung carcinoma tissue.