

Product datasheet for **AP20766PU-M**

Cardiotrophin 1 (CTF1) Rabbit Polyclonal Antibody

Product data:

Product Type:	Primary Antibodies
Applications:	IHC, WB
Recommended Dilution:	Western blot: 1/500 - 1/1000. Immunohistochemistry on paraffin sections 1/50 - 1/200.
Reactivity:	Human, Mouse, Rat
Host:	Rabbit
Clonality:	Polyclonal
Specificity:	This antibody detects endogenous levels of Cardiotrophin-1 protein. (region surrounding His31)
Formulation:	Phosphate buffered saline (PBS), pH 7.2. State: Aff - Purified State: Liquid purified Ig fraction Preservative: 0.05% sodium azide
Concentration:	1.0 mg/ml
Purification:	Affinity chromatography (> 95% (by SDS-PAGE)
Conjugation:	Unconjugated
Storage:	Store undiluted at 2-8°C for one month or (in aliquots) at -20°C for longer. Avoid repeated freezing and thawing.
Stability:	Shelf life: one year from despatch.
Predicted Protein Size:	~ 21 kDa
Gene Name:	cardiotrophin 1
Database Link:	<u>Entrez Gene 13019 Mouse</u> <u>Entrez Gene 29201 Rat</u> <u>Entrez Gene 1489 Human</u> <u>Q16619</u>



[View online »](#)

Background:

Cardiotrophin-1 (CT-1) is a member of the IL-6 family of cytokines, which signal through gp130 receptor complexes. gp130 complexes with several different receptor subunits to transmit signals from Cardiotrophin-1, IL-6, LIF, OSM, CNTF and IL-11. Cardiotrophin-1 binds to and activates the leukemia inhibitory factor (LIF) receptor/gp130 receptor complex and has been shown to induce hypertrophy in cardiac myocytes in vitro. Cardiotrophin-1, a secreted protein expressed at high levels in myocardium during cardiogenesis, has been shown to promote proliferation and survival of embryonic cardiomyocytes, suggesting a role for Cardiotrophin-1 in the activation of gp130 during cardiac development. Cardiotrophin-1 is highly expressed in heart, prostate, ovary and skeletal muscle. Lower levels of expression are seen in lung, kidney, pancreas, thymus, testis and small intestine.

Synonyms:

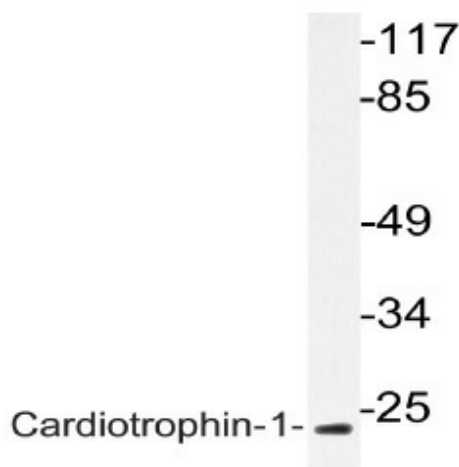
CT-1, CTF1

Protein Families:

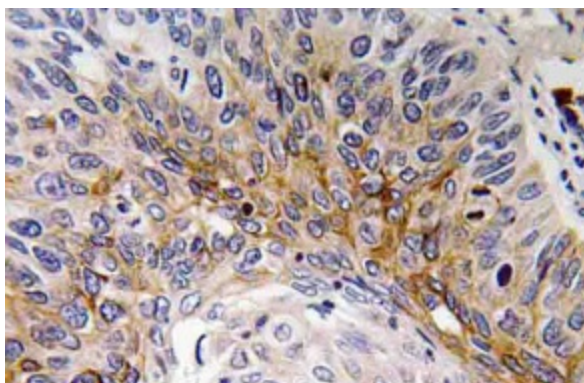
ES Cell Differentiation/IPS, Secreted Protein

Protein Pathways:

Cytokine-cytokine receptor interaction, Jak-STAT signaling pathway

Product images:


Western blot (WB) analyzes of Cardiotrophin-1 antibody (Cat.-No.: [AP20766PU-N]) in extracts from HUVEC cells.



Immunohistochemistry (IHC) analyzes of Cardiotrophin-1 antibody (Cat.-No.: [AP20766PU-N]) in paraffin-embedded human lung carcinoma tissue.