

Product datasheet for **AP20760PU-N**

PKC theta (PRKCQ) Rabbit Polyclonal Antibody

Product data:

Product Type:	Primary Antibodies
Applications:	IF, IHC, WB
Recommended Dilution:	Western blot: 1/500 - 1/1000. Immunohistochemistry on paraffin sections 1/50 - 1/200. Immunofluorescence: 1/50 - 1/200.
Reactivity:	Human, Mouse, Rat
Host:	Rabbit
Clonality:	Polyclonal
Specificity:	This antibody detects endogenous levels of PKC theta protein. (region surrounding asn670)
Formulation:	Phosphate buffered saline (PBS), pH 7.2. State: Aff - Purified State: Liquid purified Ig fraction Preservative: 15 mM sodium azide
Concentration:	1.0 mg/ml
Purification:	Affinity chromatography (> 95% (by SDS-PAGE)
Conjugation:	Unconjugated
Storage:	Store the antibody undiluted at 2-8°C for one month or (in aliquots) at -20°C for longer. Avoid repeated freezing and thawing.
Stability:	Shelf life: one year from despatch.
Predicted Protein Size:	~ 80 kDa
Gene Name:	protein kinase C theta
Database Link:	Entrez Gene 18761 Mouse Entrez Gene 85420 Rat Entrez Gene 5588 Human Q04759



[View online »](#)

Background:

Members of the protein kinase C (PKC) family play a key regulatory role in variety of cellular functions including cell growth and differentiation, gene expression, hormone secretion and membrane function. PKCs were originally identified as serine/threonine protein kinases whose activity was dependent on calcium and phospholipids. Diacylglycerols (DAG) and tumor promoting phorbol esters bind to and activate PKC. PKCs can be subdivided into at least two major classes including conventional (c) PKC isoforms (alpha, betaI, betaII and gamma) and novel (n) PKC isoforms (delta, epsilon, zeta, eta and theta). Patterns of expression for each PKC isoform differs among tissues and PKC family members exhibit clear differences in their cofactor dependencies. For instance, the kinase activities of nPKC delta and epsilon are independent of Ca^{++} . On the other hand, nPKC and epsilon, as well as all of the cPKC members, possess phorbol ester binding activities and kinase activities.

Synonyms:

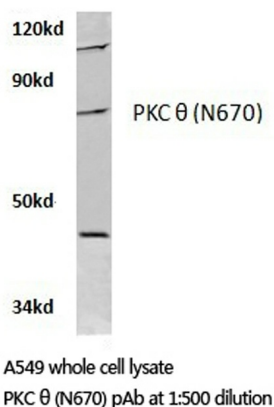
PKC theta, PKC-theta, nPKC-theta, Protein kinase C theta type

Protein Families:

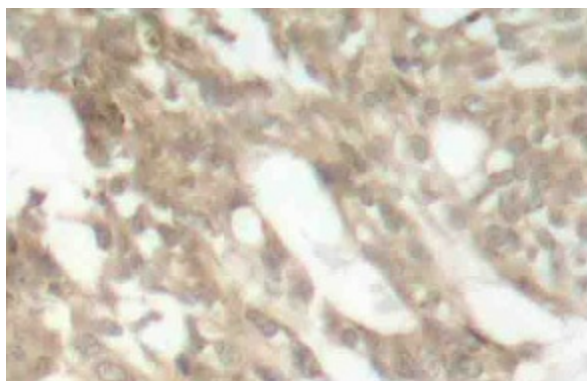
Druggable Genome, Protein Kinase, Transcription Factors

Protein Pathways:

Adipocytokine signaling pathway, T cell receptor signaling pathway, Tight junction, Vascular smooth muscle contraction

Product images:


Western blot (WB) analyzes of PKC θ antibody (Cat.-No.: AP20760PU-N) in extracts from A549 cells.



Immunohistochemistry (IHC) analyzes of PKC theta antibody (Cat.-No.: AP20760PU-N) in paraffin-embedded human skeletal muscle tissue.