

Product datasheet for **AP20759PU-N**

PKC delta (PRKCD) Rabbit Polyclonal Antibody

Product data:

Product Type:	Primary Antibodies
Applications:	IHC, WB
Recommended Dilution:	Western blot: 1/500 - 1/1000. Immunohistochemistry on paraffin sections 1/50 - 1/200.
Reactivity:	Human
Host:	Rabbit
Clonality:	Polyclonal
Specificity:	This antibody detects endogenous levels of PKC delta protein. (region surrounding asn639)
Formulation:	Phosphate buffered saline (PBS), pH 7.2. State: Aff - Purified State: Liquid purified Ig fraction Preservative: 15 mM sodium azide
Concentration:	1.0 mg/ml
Purification:	Affinity chromatography (> 95% (by SDS-PAGE)
Conjugation:	Unconjugated
Storage:	Store undiluted at 2-8°C for one month or (in aliquots) at -20°C for longer. Avoid repeated freezing and thawing.
Stability:	Shelf life: one year from despatch.
Predicted Protein Size:	~ 80 kDa
Gene Name:	protein kinase C delta
Database Link:	Entrez Gene 5580 Human Q05655



[View online »](#)

Background:

Members of the protein kinase C (PKC) family play a key regulatory role in a variety of cellular functions including cell growth and differentiation, gene expression, hormone secretion and membrane function. PKCs were originally identified as serine/threonine protein kinases whose activity was dependent on calcium and phospholipids. Diacylglycerols (DAG) and tumor promoting phorbol esters bind to and activate PKC. PKCs can be subdivided into at least two major classes including conventional (c) PKC isoforms (alpha, beta1, beta2 and gamma) and novel (n) PKC isoforms (delta, epsilon, zeta, eta and theta). Patterns of expression for each PKC isoform differs among tissues and PKC family members exhibit clear differences in their cofactor dependencies. For instance, the kinase activities of nPKC delta and epsilon are independent of Ca²⁺. On the other hand, nPKC delta and epsilon, as well as all of the cPKC members, possess phorbol ester binding activities and kinase activities.

Synonyms:

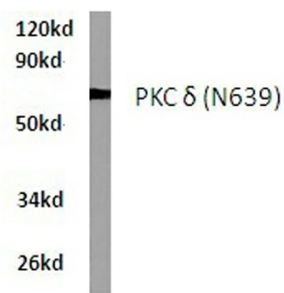
PKC-delta, PKC delta, PKCD, Protein kinase C delta type

Protein Families:

Druggable Genome, Protein Kinase

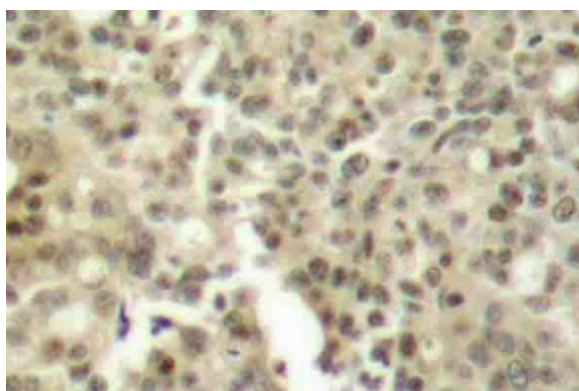
Protein Pathways:

Chemokine signaling pathway, Fc epsilon RI signaling pathway, Fc gamma R-mediated phagocytosis, GnRH signaling pathway, Neurotrophin signaling pathway, Tight junction, Type II diabetes mellitus, Vascular smooth muscle contraction

Product images:

Western blot (WB) analyzes of PKC δ antibody (Cat.-No.: AP20759PU-N) in extracts from Jurkat cells.

Jurkat whole cell lysate
PKC δ (N639) pAb at 1:500 dilution



Immunohistochemistry (IHC) analyzes of PKC delta antibody (Cat.-No.: AP20759PU-N) in paraffin-embedded human breast carcinoma tissue.