

Product datasheet for **AP20757PU-N**

NF2 Rabbit Polyclonal Antibody

Product data:

Product Type:	Primary Antibodies
Applications:	IF, WB
Recommended Dilution:	Western blot: 1/500-1/1000. Immunofluorescence: 1/50-1/200.
Reactivity:	Human, Mouse, Rat
Host:	Rabbit
Clonality:	Polyclonal
Specificity:	This antibody detects endogenous levels of Merlin protein. (region surrounding Thr512)
Formulation:	Phosphate buffered saline (PBS), pH~7.2 State: Aff - Purified State: Liquid purified Ig fraction (> 95% pure by SDS-PAGE). Preservative: 0.05% Sodium Azide
Concentration:	1.0 mg/ml
Purification:	Affinity Chromatography using epitope-specific immunogen.
Conjugation:	Unconjugated
Storage:	Store undiluted at 2-8°C for one month or (in aliquots) at -20°C for longer. Avoid repeated freezing and thawing.
Stability:	Shelf life: one year from despatch.
Predicted Protein Size:	~70 kDa
Gene Name:	neurofibromin 2 (merlin)
Database Link:	Entrez Gene 18016 Mouse Entrez Gene 25744 Rat Entrez Gene 4771 Human P35240



[View online »](#)

Background:

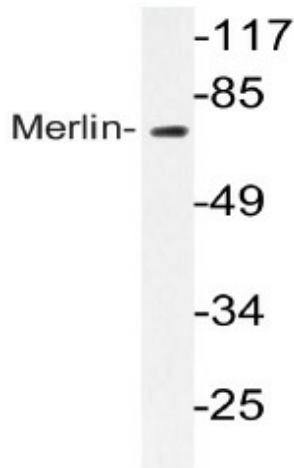
Neurofibromin 2 (NF2) is a tumor suppressor gene encoding the protein Merlin. Merlin is closely related to the ERM (ezrin, radixin, moesin) family of proteins. The precise function of Merlin is not clear. It is thought to provide a link between the actin cytoskeleton and membrane associated proteins, playing a role in transduction of extracellular signals. It has been implicated in cell proliferation and cellular motility. Mutations in the NF2 gene cause neurofibromatosis type II, a condition characterized by the development of tumors in the central nervous system.

Synonyms:

Neurofibromin-2, NF2, SCH, Schwannomin, Schwannomerlin

Protein Families:

Druggable Genome

Product images:

Western blot (WB) analyzes of Merlin antibody (Cat.-No.: AP20757PU-N) in extracts from HuvEc cells.