

Product datasheet for **AP20751PU-N**

GRIA1 Rabbit Polyclonal Antibody

Product data:

Product Type:	Primary Antibodies
Applications:	IF, IHC, WB
Recommended Dilution:	Western blot: 1/500-1/1000. Immunofluorescence: 1/50-1/200. Immunohistochemistry on Paraffin Sections: 1/50-1/200.
Reactivity:	Human, Mouse, Rat
Host:	Rabbit
Clonality:	Polyclonal
Specificity:	This antibody detects endogenous levels of GluR1 protein. (region surrounding Leu844)
Formulation:	Phosphate buffered saline (PBS), pH~7.2 State: Aff - Purified State: Liquid purified Ig fraction (> 95% pure by SDS-PAGE). Preservative: 0.05% Sodium Azide
Concentration:	1.0 mg/ml
Purification:	Affinity Chromatography using epitope-specific immunogen.
Conjugation:	Unconjugated
Storage:	Store undiluted at 2-8°C for one month or (in aliquots) at -20°C for longer. Avoid repeated freezing and thawing.
Stability:	Shelf life: one year from despatch.
Predicted Protein Size:	~ 102 kDa
Gene Name:	glutamate ionotropic receptor AMPA type subunit 1
Database Link:	Entrez Gene 14799 Mouse Entrez Gene 50592 Rat Entrez Gene 2890 Human P42261



[View online »](#)

Background:

Glutamate receptors mediate most excitatory neurotransmission in the brain and play an important role in neural plasticity, neural development and neurodegeneration. Ionotropic glutamate receptors are categorized into NMDA receptors and kainate/AMPA receptors, both of which contain glutamate-gated, calcium-specific ion channels. Kainate/AMPA receptors are co-localized with NMDA receptors in many synapses and consist of seven structurally related subunits designated GluR-1 to -7. The kainate/AMPA receptors are primarily responsible for the fast excitatory neurotransmission by glutamate whereas the NMDA receptors are functionally characterized by a slow kinetic and a high permeability for Ca²⁺ ions. The NMDA receptors consist of five subunits: epsilon 1, 2, 3, 4 and one zeta subunit. The zeta subunit is expressed throughout the brainstem whereas the four epsilon subunits display limited distribution.

Synonyms:

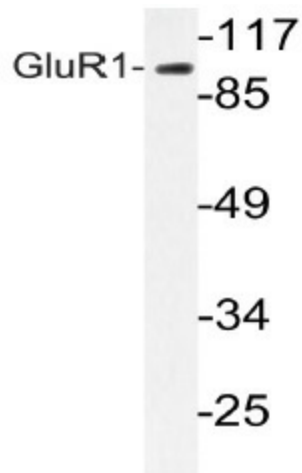
GluR-1, GRIA1, GLUH1, GluR-A, GluR-K1, Glutamate receptor ionotropic, AMPA1

Protein Families:

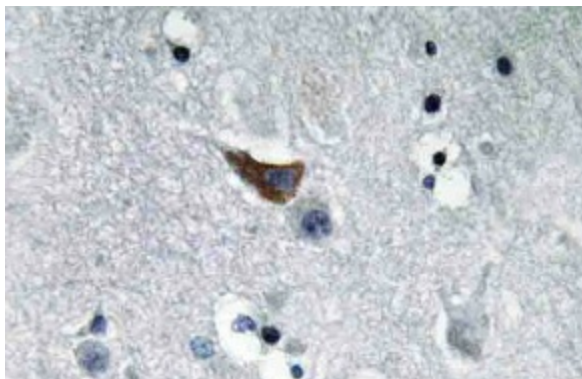
Druggable Genome, Ion Channels: Glutamate Receptors, Transmembrane

Protein Pathways:

Amyotrophic lateral sclerosis (ALS), Long-term depression, Long-term potentiation, Neuroactive ligand-receptor interaction

Product images:

Western blot (WB) analyzes of GluR1 antibody (Cat.-No.: AP20751PU-N) in extracts from COS-7 cells.



Immunohistochemistry (IHC) analyzes of GluR1 antibody (Cat.-No.: AP20751PU-N) in paraffin-embedded human brain tissue.