

Product datasheet for **AP20750PU-N**

GAP43 Rabbit Polyclonal Antibody

Product data:

Product Type:	Primary Antibodies
Applications:	IHC
Recommended Dilution:	Immunohistochemistry on paraffin sections 1/50 - 1/200.
Reactivity:	Human, Mouse, Rat
Host:	Rabbit
Clonality:	Polyclonal
Specificity:	This antibody detects endogenous levels of GAP43 protein. (region surrounding Ala35)
Formulation:	Phosphate buffered saline (PBS), pH 7.2. State: Aff - Purified State: Liquid purified Ig fraction Preservative: 0.05% sodium azide
Concentration:	1.0 mg/ml
Purification:	Affinity chromatography (> 95% (by SDS-PAGE)
Conjugation:	Unconjugated
Storage:	Store undiluted at 2-8°C for one month or (in aliquots) at -20°C for longer. Avoid repeated freezing and thawing.
Stability:	Shelf life: one year from despatch.
Predicted Protein Size:	~ 38, 43 kDa
Gene Name:	growth associated protein 43
Database Link:	Entrez Gene 14432 Mouse Entrez Gene 29423 Rat Entrez Gene 2596 Human P17677



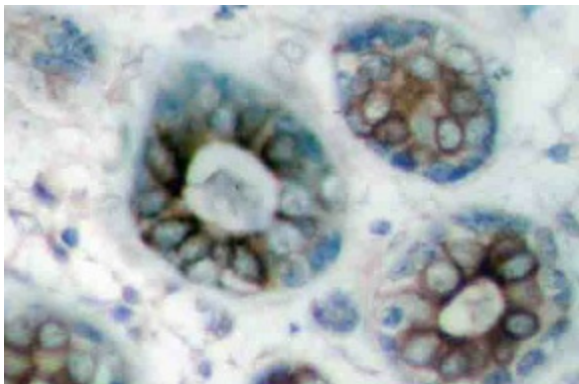
[View online »](#)

Background:

GAP-43 (growth associated protein 43, B-50, PP46, calmodulin-binding protein P-57, neuromodulin, neuron growth-associated protein 43, protein F1) is a crucial component for regenerative response in the nervous system that is present at high levels in neuronal growth cones during development and axonal regeneration. GAP-43 is normally produced by neurons during developmental growth and axonal regeneration, but it is also expressed in specific regions of the normal adult nervous system. The neuron-specific ELAV/Hu family member, HuD, interacts with and stabilizes GAP-43 mRNA in developing neurons and leads to increased levels of GAP-43 protein. Heterozygous GAP-43 knockout mice with GAP-43 levels reduced by one-half display significant memory impairments in cued conditioning or on tests of nociceptive or auditory perception.

Synonyms:

Neuromodulin

Product images:

Immunohistochemistry (IHC) analyzes of GAP43 antibody (Cat.-No.: AP20750PU-N) in paraffin-embedded human breast carcinoma tissue.