

Product datasheet for **AP20744PU-M**

DOK1 Rabbit Polyclonal Antibody

Product data:

Product Type:	Primary Antibodies
Applications:	IF, IHC, WB
Recommended Dilution:	Western blot: 1/500 - 1/1000. Immunohistochemistry on paraffin sections 1/50 - 1/200. Immunofluorescence: 1/50 - 1/200.
Reactivity:	Human, Mouse, Rat
Host:	Rabbit
Clonality:	Polyclonal
Specificity:	This antibody detects endogenous levels of Dok-1 protein. (region surrounding Pro356)
Formulation:	Phosphate buffered saline (PBS), pH 7.2 State: Aff - Purified State: Liquid purified Ig fraction Preservative: 0.05% sodium azide
Concentration:	1.0 mg/ml
Purification:	Affinity chromatography (> 95% (by SDS-PAGE)
Conjugation:	Unconjugated
Storage:	Store undiluted at 2-8°C for one month or (in aliquots) at -20°C for longer. Avoid repeated freezing and thawing.
Stability:	Shelf life: one year from despatch.
Predicted Protein Size:	~ 62 kDa
Gene Name:	docking protein 1
Database Link:	<u>Entrez Gene 13448 Mouse</u> <u>Entrez Gene 312477 Rat</u> <u>Entrez Gene 1796 Human</u> <u>Q99704</u>



[View online »](#)

Background:

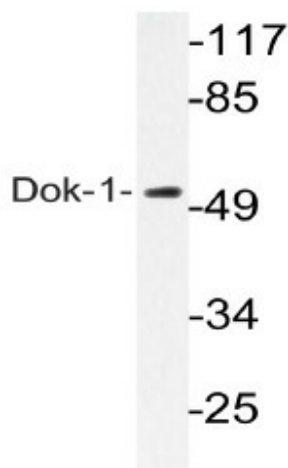
Dok-1 associates with the Ras GTPase-activating protein (Ras GAP) upon tyrosine phosphorylation. Evidence suggests that Dok-1 (also designated p62dok) is a substrate of the constitutive tyrosine kinase activity of p210 Bcr-Abl, a fusion protein caused by the t(9;22) translocation and associated with chronic myelogenous leukemia. Dok-1, as well as the tyrosine kinase substrates IRS-1 and Cas, are members of a class of “docking” proteins which contain multiple tyrosine residues and putative SH2 binding sites. Dok-1 is suspected to be the substrate phosphorylated in response to stimulation by a number of growth factors, including PDGF, VEGF, insulin and IGF.

Synonyms:

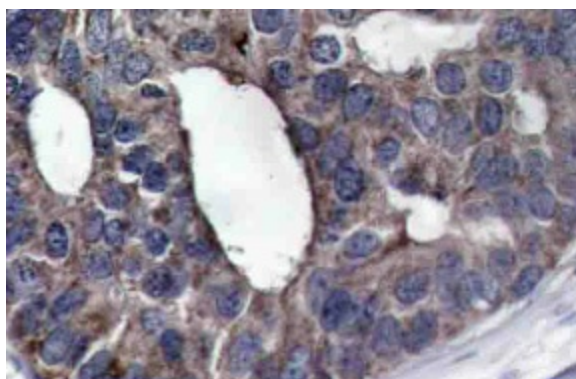
Docking protein 1, pp62, p62(dok)

Protein Families:

Druggable Genome

Product images:


Western blot (WB) analyzes of Dok-1 antibody (Cat.-No.: [AP20744PU-N]) in extracts from Jurkat cells.



Immunohistochemistry (IHC) analyzes of Dok-1 antibody (Cat.-No.: [AP20744PU-N]) in paraffin-embedded human breast carcinoma tissue.