

## Product datasheet for **AP20741PU-M**

### **DAB1 Rabbit Polyclonal Antibody**

#### **Product data:**

Product Type:	Primary Antibodies
Applications:	IF, WB
Recommended Dilution:	<b>Western blot:</b> 1/500 - 1/1000. <b>Immunofluorescence:</b> 1/50 - 1/200.
Reactivity:	Human, Mouse, Rat
Host:	Rabbit
Clonality:	Polyclonal
Specificity:	This antibody detects endogenous levels of Dab1 protein. (region surrounding Glu214)
Formulation:	Phosphate buffered saline (PBS), pH 7.2. State: Aff - Purified State: Liquid purified Ig fraction Preservative: 0.05% sodium azide
Concentration:	1.0 mg/ml
Purification:	Affinity chromatography (> 95% (by SDS-PAGE)
Conjugation:	Unconjugated
Storage:	Store undiluted at 2-8°C for one month or (in aliquots) at -20°C for longer. Avoid repeated freezing and thawing.
Stability:	Shelf life: one year from despatch.
Predicted Protein Size:	~ 60 kDa
Gene Name:	DAB1, reelin adaptor protein
Database Link:	<u><a href="#">Entrez Gene 1600 Human O75553</a></u>



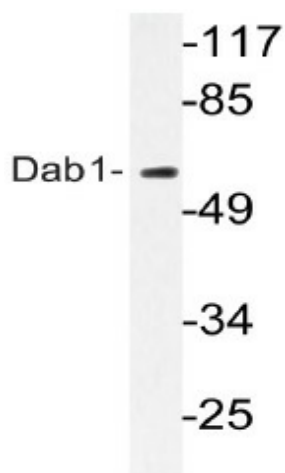
[View online »](#)

**Background:**

Dab1, a homolog of the Drosophila Disabled protein, is an adaptor protein involved in neural development. This cytoplasmic protein is tyrosine-phosphorylated during rapid expansion of the developing nervous system, and it is thought to interact with other proteins via a domain similar to the PTB domains of the Shc family. Dab1 has been shown to interact with the SH2 domains of Src, Fyn and Abl. Mutations in Dab1 result in widespread abnormalities in the brain, similar to those seen in Reelin mutants. Reelin is a secreted protein thought to play a role in directing migrating neurons. Evidence suggests that Dab1 functions downstream of Reelin in a signaling pathway involved in positioning cells in the developing brain. Dab2 (also designated DOC-2) is a mitogen-responsive phosphoprotein that binds the SH3 domain of Grb2, and it is thought to be a negative regulator of growth.

**Synonyms:**

Disabled homolog 1

**Product images:**


Western blot (WB) analyzes of Dab1 antibody (Cat.-No.: [AP20741PU-N]) in extracts from HeLa cells.