

## Product datasheet for **AP20738PU-N**

### Cortactin (CTTN) Rabbit Polyclonal Antibody

#### Product data:

Product Type:	Primary Antibodies
Applications:	IF, IHC, WB
Recommended Dilution:	<b>Western blot:</b> 1/500-1/1000. <b>Immunofluorescence:</b> 1/50-1/200. <b>Immunohistochemistry on Paraffin Sections:</b> 1/50-1/200.
Reactivity:	Human, Mouse
Host:	Rabbit
Clonality:	Polyclonal
Specificity:	This antibody detects endogenous levels of Cortactin protein. (region surrounding Tyr460)
Formulation:	Phosphate buffered saline (PBS), pH~7.2 State: Aff - Purified State: Liquid purified Ig fraction (> 95% pure by SDS-PAGE) Preservative: 0.05% Sodium Azide
Concentration:	1.0 mg/ml
Purification:	Affinity Chromatography using epitope-specific immunogen
Conjugation:	Unconjugated
Storage:	Store undiluted at 2-8°C for one month or (in aliquots) at -20°C for longer. Avoid repeated freezing and thawing.
Stability:	Shelf life: one year from despatch.
Predicted Protein Size:	~85.0 kDa
Gene Name:	cortactin
Database Link:	<a href="#">Entrez Gene 13043 Mouse</a> <a href="#">Entrez Gene 2017 Human</a> <a href="#">Q14247</a>



[View online »](#)

**Background:**

Cortactin is an 80/85 kDa cytoskeleton protein that facilitates assembly of cortical actin. Cortactin is widely expressed in most adherent cells and is a prominent substrate of protein tyrosine kinase Src in vivo and in vitro. The protein sequence of cortactin contains multiple amino terminal tandem repeats of a unique 37 amino acid sequence, which associates with actin, and a Src homology 3 (SH3) domain at the carboxyl terminus. Between the repeat and the SH3 domain, there is an alpha helical structure followed by a proline rich region. Between the proline rich region and the SH3 domain, there are a series of Src phosphorylation sites (Tyr421, Tyr470, and Tyr486). In vitro, cortactin binds to and cross links F actin into meshworks.

**Synonyms:**

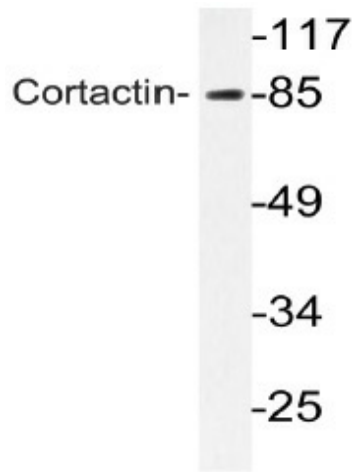
CTTN, EMS1, Amplaxin, Oncogene EMS1

**Protein Families:**

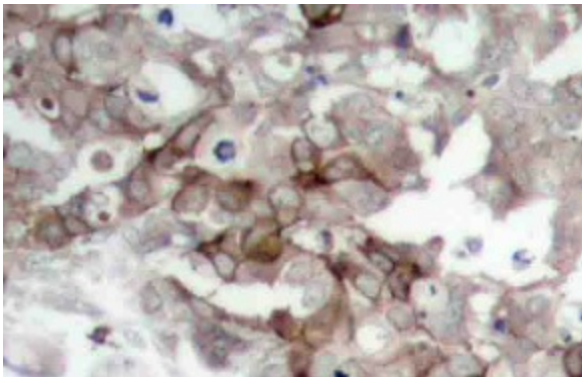
Druggable Genome

**Protein Pathways:**

Pathogenic Escherichia coli infection, Tight junction

**Product images:**

Western blot analysis of Cortactin Antibody (Cat.-No AP20738PU-N) in extracts from HeLa cells.



Immunohistochemistry analysis of Cortactin Antibody (Cat.-No AP20738PU-N) in paraffin-embedded human breast carcinoma tissue.