

Product datasheet for **AP20720PU-M**

MET Rabbit Polyclonal Antibody

Product data:

Product Type:	Primary Antibodies
Applications:	IF, WB
Recommended Dilution:	Western blot: 1/500 - 1/1000. Immunofluorescence: 1/50 - 1/200.
Reactivity:	Human, Mouse, Rat
Host:	Rabbit
Clonality:	Polyclonal
Specificity:	This antibody detects endogenous levels of Met protein. (region surrounding Thr1343)
Formulation:	Phosphate buffered saline (PBS), pH 7.2 State: Aff - Purified State: Liquid purified Ig fraction Preservative: 0.05% sodium azide
Concentration:	1.0 mg/ml
Purification:	Affinity-chromatography using epitope-specific immunogen; purity is > 95% (by SDS-PAGE)
Conjugation:	Unconjugated
Storage:	Store undiluted at 2-8°C for one month or (in aliquots) at -20°C for longer. Avoid repeated freezing and thawing.
Stability:	Shelf life: one year from despatch.
Predicted Protein Size:	~ 170 kDa
Gene Name:	MET proto-oncogene, receptor tyrosine kinase
Database Link:	<u>Entrez Gene 17295 Mouse</u> <u>Entrez Gene 24553 Rat</u> <u>Entrez Gene 4233 Human</u> <u>P08581</u>



[View online »](#)

Background:

The c-Met oncogene was originally isolated from a chemical carcinogentreated human osteogenic sarcoma cell line by transfection analysis in NIH/ 3T3 cells. The Met proto-oncogene product was identified as a transmembrane receptor-like protein with tyrosine kinase activity that is expressed in many tissues. A high proportion of spontaneous NIH/3T3 transformants overexpress c-Met and by transfection analysis the c-Met proto-oncogene has been shown to exhibit transforming activity. Tyrosine phosphorylation of apparently normal Met protein has also been observed in certain human gastric carcinoma cell lines. The c-Met gene product has been identified as the cell surface receptor for hepatocyte growth factor, a plasminogenlike protein thought to be humoral mediator of liver regeneration.

Synonyms:

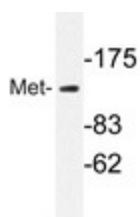
Hepatocyte growth factor receptor, MET, Scatter factor receptor, HGF/SF receptor, c-Met

Protein Families:

Druggable Genome, Protein Kinase, Transmembrane

Protein Pathways:

Adherens junction, Axon guidance, Colorectal cancer, Cytokine-cytokine receptor interaction, Endocytosis, Epithelial cell signaling in Helicobacter pylori infection, Focal adhesion, Melanoma, Pathways in cancer, Renal cell carcinoma

Product images:


Western blot analyzes of Met antibody (Cat.-No.: [AP20720PU-N]) in extracts from HepG2 cells.