

Product datasheet for **AP20718PU-N**

PDGF Receptor beta (PDGFRB) Rabbit Polyclonal Antibody

Product data:

Product Type:	Primary Antibodies
Applications:	IF, IHC, WB
Recommended Dilution:	Western blot: 1/500 - 1/1000. Immunohistochemistry on paraffin sections: 1/50 - 1/200. Immunofluorescence: 1/50 - 1/200.
Reactivity:	Human, Mouse, Rat
Host:	Rabbit
Clonality:	Polyclonal
Immunogen:	Synthetic peptide, corresponding to amino acids 711-760 of Human PDGFR- β .
Specificity:	This antibody detects endogenous levels of PDGFR- β protein. (region surrounding Lys745)
Formulation:	Phosphate buffered saline (PBS), pH 7.2 State: Aff - Purified State: Liquid purified Ig fraction Preservative: 0.05% sodium azide
Concentration:	1.0 mg/ml
Purification:	Affinity-chromatography using epitope-specific immunogen; purity is > 95% (by SDS-PAGE)
Conjugation:	Unconjugated
Storage:	Store undiluted at 2-8°C for one month or (in aliquots) at -20°C for longer. Avoid repeated freezing and thawing.
Stability:	Shelf life: one year from despatch.
Predicted Protein Size:	~ 124, 190 kDa
Gene Name:	platelet derived growth factor receptor beta
Database Link:	Entrez Gene 18596 Mouse Entrez Gene 24629 Rat Entrez Gene 5159 Human P09619



[View online »](#)

Background:

Platelet-derived growth factor receptors exhibit tyrosine-protein kinase activity and have been implicated in the control of cell proliferation, survival and migration. PDGF receptors, PDGFR-alpha and PDGFR-beta, have 5 extracellular immunoglobulin-like domains and an intracellular tyrosine kinase domain. Upon binding a PDGF, the receptors form homo- and heterodimers. Dimerization of the receptors results in phosphorylation in the complex. More than 10 different SH2-domain-containing molecules have been shown to bind to different autophosphorylation sites in the PDGF-alpha and beta receptors. PDGF alpha receptors are expressed in oligodendrocyte progenitor cells and PDGF beta receptors are expressed on neurons.

Synonyms:

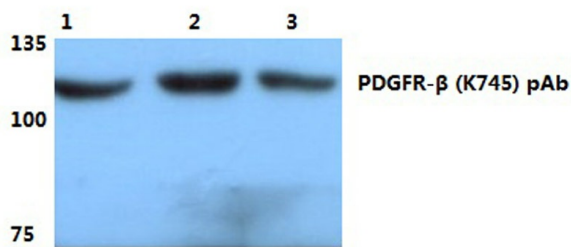
PDGF-R-beta, PDGF Receptor beta

Protein Families:

Druggable Genome, ES Cell Differentiation/IPS, Protein Kinase, Transmembrane

Protein Pathways:

Calcium signaling pathway, Colorectal cancer, Cytokine-cytokine receptor interaction, Focal adhesion, Gap junction, Glioma, MAPK signaling pathway, Melanoma, Pathways in cancer, Prostate cancer, Regulation of actin cytoskeleton

Product images:

Western blot (WB) analyzes of PDGFR-β antibody (Cat.-No.: AP20718PU-N)

Lane1: H9C2 whole cell lysate

Lane2:PC12 whole cell lysate

Lane3:sp2/0 whole cell lysate

PDGFR-β (K745) pAb at 1:500 dilution