

## Product datasheet for **AP20717PU-M**

### Stathmin 1 (STMN1) Rabbit Polyclonal Antibody

#### Product data:

Product Type:	Primary Antibodies
Applications:	IHC, WB
Recommended Dilution:	<b>Western blot:</b> 1/500 - 1/1000. <b>Immunohistochemistry on paraffin sections:</b> 1/50 - 1/200.
Reactivity:	Human, Mouse, Rat
Host:	Rabbit
Clonality:	Polyclonal
Specificity:	This antibody detects endogenous levels of Op18 protein. (region surrounding Val31)
Formulation:	Phosphate buffered saline (PBS), pH 7.2 State: Aff - Purified State: Liquid purified Ig fraction Preservative: 0.05% sodium azide
Concentration:	1.0 mg/ml
Purification:	Affinity-chromatography using epitope-specific immunogen; purity is > 95% (by SDS-PAGE)
Conjugation:	Unconjugated
Storage:	Store undiluted at 2-8°C for one month or (in aliquots) at -20°C for longer. Avoid repeated freezing and thawing.
Stability:	Shelf life: one year from despatch.
Predicted Protein Size:	~ 19 kDa
Gene Name:	stathmin 1
Database Link:	<u><a href="#">Entrez Gene 16765 Mouse</a></u> <u><a href="#">Entrez Gene 29332 Rat</a></u> <u><a href="#">Entrez Gene 3925 Human</a></u> <u><a href="#">P16949</a></u>



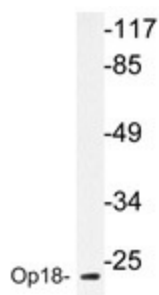
[View online »](#)

**Background:** Op18 (for oncoprotein 18, also designated stathmin, prosolin or metablastin) is a conserved, tubulin-associated, intracellular phosphoprotein. Many different phosphorylated forms of Op18 are observed, and it is expressed as two different isoforms. Op18 is considered a critical regulator of microtubulin dynamics and is downregulated by p53. It serves as a transducing protein, via phosphorylation, for a variety of cell signaling pathways and is involved in both mitosis and differentiation. Op18 is present in many cancers, including breast carcinomas, and is highly expressed in acute leukemias of different subtypes.

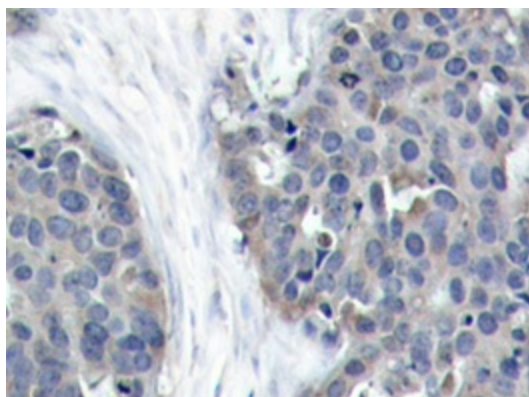
**Synonyms:** LAP18, OP18, Phosphoprotein p19, pp19, Leukemia-associated phosphoprotein p18, Oncoprotein 18, Op18, pp17, Prosolin, Metablastin, Protein Pr22

**Protein Pathways:** MAPK signaling pathway

### Product images:



Western blot analyzes of Op18 antibody (Cat.-No.: [AP20717PU-N]) in extracts from HepG2 cells.



Immunohistochemistry analyzes of Op18 antibody (Cat.-No.: [AP20717PU-N]) in paraffin-embedded human breast carcinoma tissue.