

Product datasheet for **AP20706PU-M**

beta Catenin (CTNNB1) Rabbit Polyclonal Antibody

Product data:

Product Type:	Primary Antibodies
Applications:	IHC, WB
Recommended Dilution:	Western blot: 1/500 - 1/1000. Immunohistochemistry on paraffin sections: 1/50 - 1/200.
Reactivity:	Human, Mouse, Rat
Host:	Rabbit
Clonality:	Polyclonal
Specificity:	This antibody detects endogenous levels of Catenin- β protein. (region surrounding Tyr30)
Formulation:	Phosphate buffered saline (PBS), pH 7.2 State: Aff - Purified State: Liquid purified Ig fraction Preservative: 0.05% sodium azide
Concentration:	1.0 mg/ml
Purification:	Affinity-chromatography using epitope-specific immunogen; purity is > 95% (by SDS-PAGE)
Conjugation:	Unconjugated
Storage:	Store undiluted at 2-8°C for one month or (in aliquots) at -20°C for longer. Avoid repeated freezing and thawing.
Stability:	Shelf life: one year from despatch.
Predicted Protein Size:	~ 92 kDa
Gene Name:	catenin beta 1
Database Link:	<u>Entrez Gene 12387 Mouse</u> <u>Entrez Gene 84353 Rat</u> <u>Entrez Gene 1499 Human</u> <u>P35222</u>



[View online »](#)

Background:

The catenins, α , β and γ , are proteins which bind to the highly conserved, intracellular cytoplasmic tail of E-cadherin. Together, the catenin/cadherin complexes play an important role mediating cellular adhesion. α -catenin was initially described as an E-cadherin associated protein, and since has been shown to associate with other members of the cadherin family, such as N-cadherin and P-cadherin. β -catenin associates with the cytoplasmic portion of E-cadherin, which is necessary for the function of E-cadherin as an adhesion molecule. β -catenin has also been found in complexes with the tumor suppressor protein APC. γ -catenin, also known as plakoglobin, binds with α -catenin and N-cadherin. It has been shown that the transmembrane phosphatase PTP μ associates with catenin/cadherin complexes and may regulate complex signaling.

Synonyms:

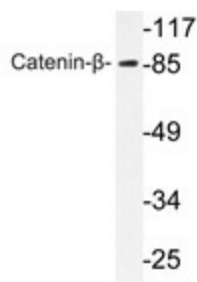
CTNNB1, CTNNB, Beta-catenin

Protein Families:

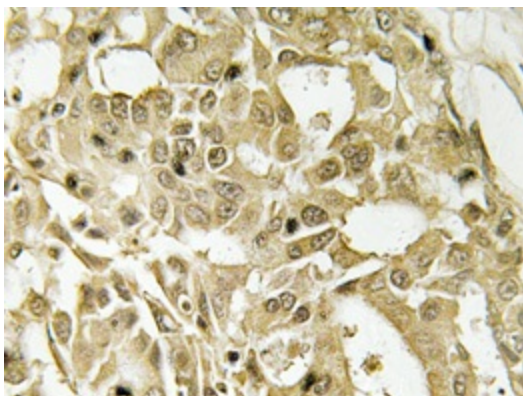
Druggable Genome, ES Cell Differentiation/IPS, Transcription Factors

Protein Pathways:

Adherens junction, Arrhythmogenic right ventricular cardiomyopathy (ARVC), Basal cell carcinoma, Colorectal cancer, Endometrial cancer, Focal adhesion, Leukocyte transendothelial migration, Melanogenesis, Pathogenic Escherichia coli infection, Pathways in cancer, Prostate cancer, Thyroid cancer, Tight junction, Wnt signaling pathway

Product images:


Western blot analyzes of Catenin- β antibody (Cat.-No.: [AP20706PU-N]) in extracts from HT-29 cells.



Immunohistochemistry analyzes of Catenin- β antibody (Cat.-No.: [AP20706PU-N]) in paraffin-embedded human breast carcinoma tissue.