

Product datasheet for **AP20704PU-M**

NF-kB p65 (RELA) Rabbit Polyclonal Antibody

Product data:

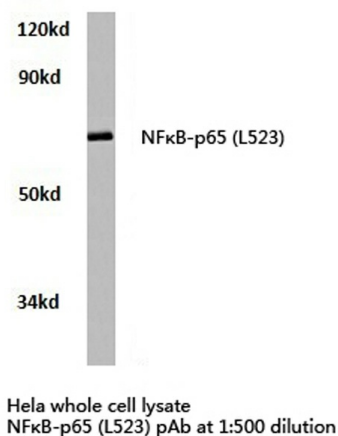
Product Type:	Primary Antibodies
Applications:	IHC, WB
Recommended Dilution:	Western blot: 1/500 - 1/1000. Immunohistochemistry on paraffin sections: 1/50 - 1/200.
Reactivity:	Human, Mouse
Host:	Rabbit
Clonality:	Polyclonal
Specificity:	This antibody detects endogenous levels of NFkB-p65 protein. (region surrounding Leu523)
Formulation:	Phosphate buffered saline (PBS), pH 7.2 State: Aff - Purified State: Liquid purified Ig fraction Preservative: 15 mM sodium azide
Concentration:	1.0 mg/ml
Purification:	Affinity-chromatography using epitope-specific immunogen; purity is > 95% (by SDS-PAGE)
Conjugation:	Unconjugated
Storage:	Store undiluted at 2-8°C for one month or (in aliquots) at -20°C for longer. Avoid repeated freezing and thawing.
Stability:	Shelf life: one year from despatch.
Predicted Protein Size:	~ 60, 75 kDa
Gene Name:	RELA proto-oncogene, NF-kB subunit
Database Link:	<u>Entrez Gene 19697 Mouse</u> <u>Entrez Gene 5970 Human</u> <u>Q04206</u>



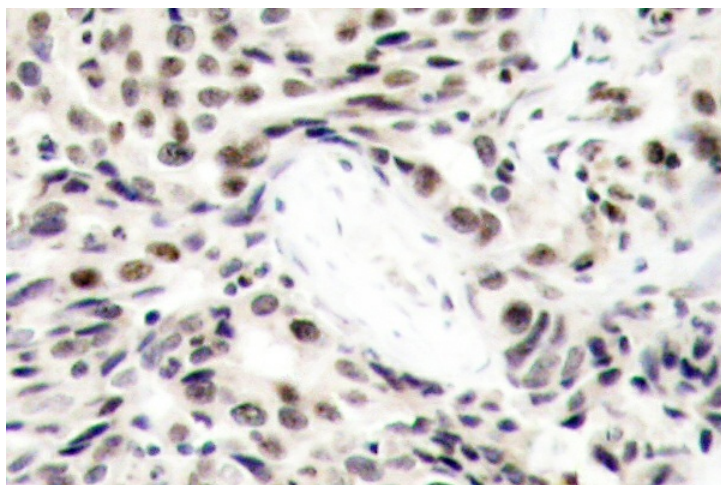
[View online »](#)

Background:	p65 is a subunit of the nuclear factor kappa B. The transcription factor NFkB is widely recognized as a critical mediator of immune and inflammatory responses. In most cell types, NFkB is found in the cytoplasm where it is associated with an inhibitory prd in many tissues. A high proportion of spontaneous NIH/3T3 transformants overexpress c-Met and by transfection analysis the c-Met proto-oncogene has been shown to exhibit transforming activity.
Synonyms:	NF kappa B p65, NFkB p65, Transcription factor p65, Rel A, NFKB3
Protein Families:	Druggable Genome, Transcription Factors
Protein Pathways:	Acute myeloid leukemia, Adipocytokine signaling pathway, Apoptosis, B cell receptor signaling pathway, Chemokine signaling pathway, Chronic myeloid leukemia, Cytosolic DNA-sensing pathway, Epithelial cell signaling in Helicobacter pylori infection, MAPK signaling pathway, Neurotrophin signaling pathway, NOD-like receptor signaling pathway, Pancreatic cancer, Pathways in cancer, Prostate cancer, RIG-I-like receptor signaling pathway, Small cell lung cancer, T cell receptor signaling pathway, Toll-like receptor signaling pathway

Product images:



Western blot (WB) analyzes of NFkB-p65 antibody (Cat.-No.: [AP20704PU-N]) in extracts from hela cells.



Immunohistochemistry (IHC) analyzes of NF- κ B-p65 antibody (Cat.-No.: [AP20704PU-N]) in paraffin-embedded human breast carcinoma tissue.