

Product datasheet for **AP20703PU-M**

IKB alpha (NFKBIA) Rabbit Polyclonal Antibody

Product data:

Product Type:	Primary Antibodies
Applications:	IF, IHC, WB
Recommended Dilution:	Western blot: 1/500 - 1/1000. Immunohistochemistry on paraffin sections 1/50 - 1/200. Immunofluorescence: 1/50 - 1/200.
Reactivity:	Human, Mouse, Rat
Host:	Rabbit
Clonality:	Polyclonal
Specificity:	This antibody detects endogenous levels of IκB-α protein.
Formulation:	Phosphate buffered saline (PBS), pH 7.2 State: Aff - Purified State: Liquid purified Ig fraction Preservative: 0.05% sodium azide
Concentration:	1.0 mg/ml
Purification:	Affinity-chromatography using epitope-specific immunogen; purity is > 95% (by SDS-PAGE)
Conjugation:	Unconjugated
Storage:	Store undiluted at 2-8°C for one month or (in aliquots) at -20°C for longer. Avoid repeated freezing and thawing.
Stability:	Shelf life: one year from despatch.
Predicted Protein Size:	~ 36 kDa
Gene Name:	NFKB inhibitor alpha
Database Link:	<u>Entrez Gene 18035 Mouse</u> <u>Entrez Gene 25493 Rat</u> <u>Entrez Gene 4792 Human</u> <u>P25963</u>



[View online »](#)

Background:

On the basis of both functional and structural considerations, members of the I κ B family of proteins can be divided into four groups. The first of these groups, I κ B- α , includes the avian protein pp40 and the mammalian MAD-3, both of which inhibit binding of p50-p65 NF κ B complex or Rel protein to their cognate binding sites but do not inhibit the binding of p50 homodimer to κ B sites, suggesting that the I κ B- α family binds to the p65 subunit of p50-p65 heterocomplex through ankyrin repeats. The second member of the I κ B family is represented by a protein designated I κ B- β . The third group of I κ B proteins is represented by I κ B- γ , which is identical in sequence with the C-terminal domain of the p110 precursor of NF κ B p50 and is expressed predominantly in lymphoid cells. An additional I κ B family member, I κ B- ϵ , has several phosphorylated forms and is primarily found complexed with Rel A and/or c-Rel.

Synonyms:

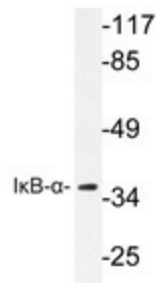
I-kappa-B-alpha, MAD3, NFKBI, I kappa B-alpha, IkappaBalpaha, I κ B-alpha

Protein Families:

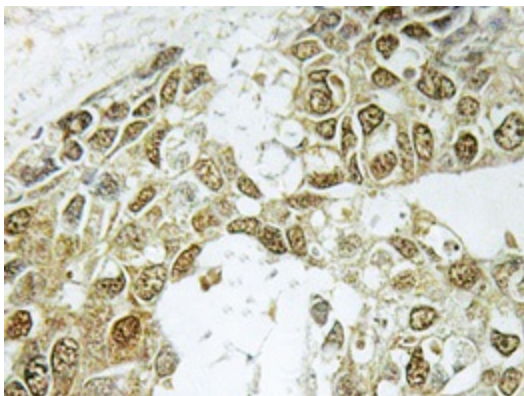
Druggable Genome

Protein Pathways:

Adipocytokine signaling pathway, Apoptosis, B cell receptor signaling pathway, Chemokine signaling pathway, Chronic myeloid leukemia, Cytosolic DNA-sensing pathway, Epithelial cell signaling in Helicobacter pylori infection, Neurotrophin signaling pathway, NOD-like receptor signaling pathway, Pathways in cancer, Prostate cancer, RIG-I-like receptor signaling pathway, Small cell lung cancer, T cell receptor signaling pathway, Toll-like receptor signaling pathway

Product images:


Western blot analyzes of I κ B- α antibody (Cat.-No.: [AP20703PU-N]) in extracts from 293 cells.



Immunohistochemistry analyzes of I κ B- α antibody (Cat.-No. [AP20703PU-N]) in paraffin-embedded human breast carcinoma tissue.