

## Product datasheet for **AP20698PU-S**

### SRC Rabbit Polyclonal Antibody

#### Product data:

Product Type:	Primary Antibodies
Applications:	IHC, WB
Recommended Dilution:	<b>Western blot:</b> 1/500-1/1000. <b>Immunohistochemistry on paraffin sections:</b> 1/50-1/200.
Reactivity:	Human, Mouse, Rat
Host:	Rabbit
Clonality:	Polyclonal
Specificity:	This antibody detects endogenous levels of c-Src protein. (region surrounding Thr523)
Formulation:	Phosphate buffered saline (PBS), pH 7.2 State: Aff - Purified State: Liquid purified Ig fraction Preservative: 15 mM sodium azide
Concentration:	1.0 mg/ml
Purification:	Affinity-chromatography using epitope-specific immunogen; purity is > 95% (by SDS-PAGE)
Conjugation:	Unconjugated
Storage:	Store undiluted at 2-8°C for one month or (in aliquots) at -20°C for longer. Avoid repeated freezing and thawing.
Stability:	Shelf life: one year from despatch.
Predicted Protein Size:	~ 60 kDa
Gene Name:	SRC proto-oncogene, non-receptor tyrosine kinase
Database Link:	<u><a href="#">Entrez Gene 20779 Mouse</a></u> <u><a href="#">Entrez Gene 83805 Rat</a></u> <u><a href="#">Entrez Gene 6714 Human</a></u> <u><a href="#">P12931</a></u>



[View online »](#)

**Background:**

The major translational products of each of the eight members of the Src gene family identified to date are membrane-associated tyrosine protein kinases that lack transmembrane and external amino acid sequences, thereby distinguishing this group from the receptor class of tyrosine kinases. Members of this group include c-Src, c-Yes, Fyn, Lck, Lyn, Blk and c-Fgr. The major Src gene encoded protein, c-Src (also designated pp60Src, Src p60 and proto-oncogene tyrosine protein kinase Src) is expressed in a broad range of tissue and cell types, although the highest levels of c-Src are detected in neuronal tissues and platelets. c-Src may play a role in events associated with both neuronal differentiation and maintenance of mature neuronal cell functions.

**Synonyms:**

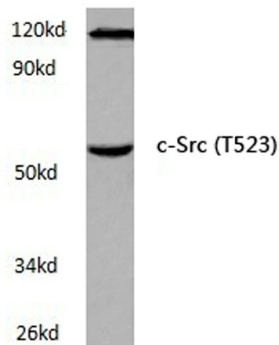
c-Src, pp60c-src

**Protein Families:**

Druggable Genome, ES Cell Differentiation/IPS, Protein Kinase, Stem cell relevant signaling - JAK/STAT signaling pathway

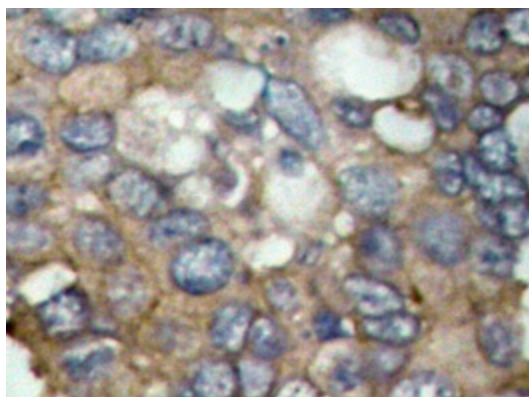
**Protein Pathways:**

Adherens junction, Endocytosis, Epithelial cell signaling in Helicobacter pylori infection, ErbB signaling pathway, Focal adhesion, Gap junction, GnRH signaling pathway, Tight junction, VEGF signaling pathway

**Product images:**

SP20 whole cell lysate  
c-Src (T523) pAb at 1:500 dilution

Western blot (WB) analyzes of c-Src antibody (Cat.-No.: [AP20698PU-N]) in extracts from SP20 cells.



Immunohistochemistry analyzes of c-Src antibody (Cat.-No.: [AP20698PU-N]) in paraffin-embedded human breast carcinoma tissue.