

## Product datasheet for **AP20696PU-N**

### **c Abl (ABL1) Rabbit Polyclonal Antibody**

#### **Product data:**

|                         |  |
|-------------------------|--|
| Product Type:           | Primary Antibodies   |
| Applications:           | IHC, WB  |
| Recommended Dilution:   | <b>Western blot:</b> 1/500-1/1000.<br><b>Immunohistochemistry on paraffin sections</b> 1/50-1/200.   |
| Reactivity:             | Human, Mouse   |
| Host:                   | Rabbit   |
| Clonality:              | Polyclonal   |
| Specificity:            | This antibody detects endogenous levels of c-Abl protein.<br>(region surrounding Leu406)   |
| Formulation:            | Phosphate buffered saline (PBS), pH 7.2<br>State: Aff - Purified<br>State: Liquid purified Ig fraction<br>Preservative: 0.05% sodium azide |
| Concentration:          | 1.0 mg/ml  |
| Purification:           | Affinity-chromatography using epitope-specific immunogen; purity is > 95% (by SDS-PAGE)  |
| Conjugation:            | Unconjugated   |
| Storage:                | Store undiluted at 2-8°C for one month or (in aliquots) at -20°C for longer.<br>Avoid repeated freezing and thawing.                       |
| Stability:              | Shelf life: one year from despatch.  |
| Predicted Protein Size: | ~ 123 kDa  |
| Gene Name:              | ABL proto-oncogene 1, non-receptor tyrosine kinase   |
| Database Link:          | <a href="#">Entrez Gene 11350 Mouse</a> <a href="#">Entrez Gene 25 Human</a><br><a href="#">P00519</a>                                     |



[View online »](#)

**Background:**

The Abl oncogene was initially identified as the viral transforming gene of Abelson murine leukemia virus (A-MuLV). The major translational product of c-Abl has been identified as a protein with tyrosine kinase activity and an SH2 domain. The Abl oncogene is implicated in several human leukemias including 90-95% of chronic myelocytic leukemia (CML), 20-25% of adult acute lymphoblastic leukemia (ALL) and 2-5% of pediatric ALL. In these leukemias the c-Abl proto-oncogene undergoes a (9;22) chromosomal translocation producing the Philadelphia (Ph1) chromosome. The molecular consequence of this translocation is the generation of a chimeric Bcr/c-Abl mRNA encoding activated Abl protein-tyrosine kinase. The Bcr gene has been shown to encode a GTPase-activating protein (GAP) specific for the Ras-related GTP-binding protein, p21rac.

**Synonyms:**

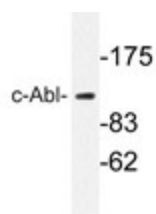
c-ABL, p150, JTK7, bcr/abl

**Protein Families:**

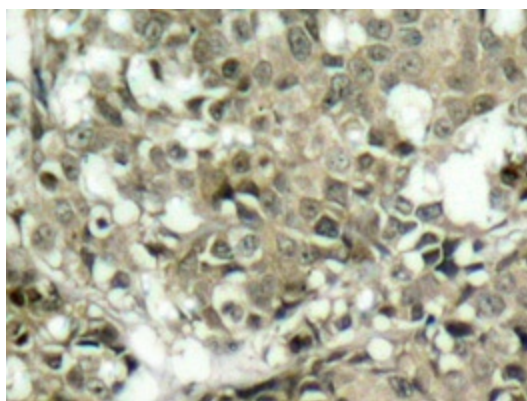
Druggable Genome, Protein Kinase, Transcription Factors

**Protein Pathways:**

Axon guidance, Cell cycle, Chronic myeloid leukemia, ErbB signaling pathway, Neurotrophin signaling pathway, Pathogenic Escherichia coli infection, Pathways in cancer, Viral myocarditis

**Product images:**

Western blot analyzes of c-Abl antibody (Cat.-No.: AP20696PU-N) in extracts from RAW264.7 cells.



Immunohistochemistry analyzes of c-Abl antibody (Cat.-No.: AP20696PU-N) in paraffin-embedded human breast carcinoma tissue.