

## Product datasheet for **AP20690PU-M**

### Paxillin (PXN) Rabbit Polyclonal Antibody

#### Product data:

Product Type:	Primary Antibodies
Applications:	IF, IHC, WB
Recommended Dilution:	<b>Western blot:</b> 1/500-1/1000. <b>Immunohistochemistry on paraffin sections</b> 1/50-1/200. <b>Immunofluorescence:</b> 1/50-1/200.
Reactivity:	Human, Mouse, Rat
Host:	Rabbit
Clonality:	Polyclonal
Specificity:	This antibody detects endogenous levels of Paxillin protein. (region surrounding Leu25)
Formulation:	Phosphate buffered saline (PBS), pH 7.2 State: Aff - Purified State: Liquid purified Ig fraction Preservative: 0.05% sodium azide
Concentration:	1.0 mg/ml
Purification:	Affinity-chromatography using epitope-specific immunogen; purity is > 95% (by SDS-PAGE)
Conjugation:	Unconjugated
Storage:	Store undiluted at 2-8°C for one month or (in aliquots) at -20°C for longer. Avoid repeated freezing and thawing.
Stability:	Shelf life: one year from despatch.
Predicted Protein Size:	~ 68 kDa
Gene Name:	paxillin
Database Link:	<u><a href="#">Entrez Gene 19303 Mouse</a></u> <u><a href="#">Entrez Gene 360820 Rat</a></u> <u><a href="#">Entrez Gene 5829 Human</a></u> <u><a href="#">P49023</a></u>



[View online »](#)

**Background:**

Paxillin is a focal adhesion phosphoprotein that is localized to the cytoskeleton. Phosphorylation of paxillin has been shown to occur in response to PDGF treatment, v-Src transformation or cross-linking of integrins. FAK (focal adhesion kinase) and PYK2 have been shown to phosphorylate paxillin. FAK phosphorylates paxillin specifically on Tyr 118 in vitro. However, FAK phosphorylation does not seem to be required for the recruitment of paxillin to cell adhesion sites. Paxillin may play a role in signal transduction, regulation of cell morphology and the recruitment of structural and signaling molecules to focal adhesions. It has been shown that the amount of paxillin is reduced in mitotic cells by proteolytic downregulation and that paxillin is alternatively phosphorylated on serine rather than on tyrosine and serine during mitosis.

**Synonyms:**

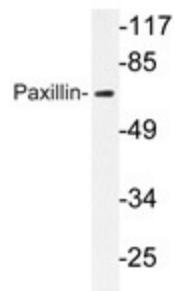
FLJ16691

**Protein Families:**

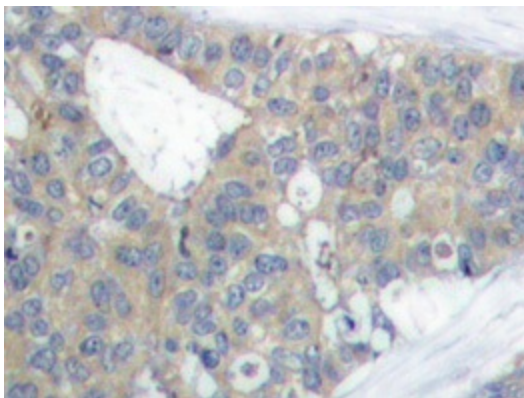
Druggable Genome, Stem cell - Pluripotency

**Protein Pathways:**

Chemokine signaling pathway, Focal adhesion, Leukocyte transendothelial migration, Regulation of actin cytoskeleton, VEGF signaling pathway

**Product images:**


Western blot analyzes of Paxillin antibody (Cat.-No.: [AP20690PU-N]) in extracts from COS-7 cells.



Immunohistochemistry analyzes of Paxillin antibody (Cat.-No.: [AP20690PU-N]) in paraffin-embedded human breast carcinoma tissue.