

Product datasheet for **AP20686PU-S**

Ezrin (EZR) Rabbit Polyclonal Antibody

Product data:

Product Type:	Primary Antibodies
Applications:	WB
Recommended Dilution:	Western blot: 1/500 - 1/1000.
Reactivity:	Human, Mouse, Rat
Host:	Rabbit
Clonality:	Polyclonal
Specificity:	This antibody detects endogenous levels of Ezrin protein. (region surrounding Gly560)
Formulation:	Phosphate buffered saline (PBS), pH 7.2. State: Aff - Purified State: Liquid purified Ig fraction Preservative: 15 mM sodium azide
Concentration:	1.0 mg/ml
Purification:	Affinity chromatography (> 95% (by SDS-PAGE)
Conjugation:	Unconjugated
Storage:	Store undiluted at 2-8°C for one month or (in aliquots) at -20°C for longer. Avoid repeated freezing and thawing.
Stability:	Shelf life: one year from despatch.
Predicted Protein Size:	~ 69, 81 kDa
Gene Name:	ezrin
Database Link:	Entrez Gene 22350 Mouse Entrez Gene 54319 Rat Entrez Gene 7430 Human P15311



[View online »](#)

Background:

Ezrin, Moesin and Radixin belong to a family of highly homologous Actin-associated proteins that are localized just beneath the plasma membrane. The proteins are believed to be involved in the mediation of interactions between cytoskeletal and membrane proteins. Ezrin serves as a major cytoplasmic substrate of various protein-tyrosine kinases, including the epidermal growth factor receptor. Ezrin has also been identified as a cAMP-dependent protein kinase (A-kinase) anchoring protein and designated AKAP78. Moesin and Radixin share over 70% homology with Ezrin and are coexpressed within various cell types. Despite the high degree of homology, the three proteins exhibit a distinct receptorspecific pattern of phosphorylation.

Synonyms:

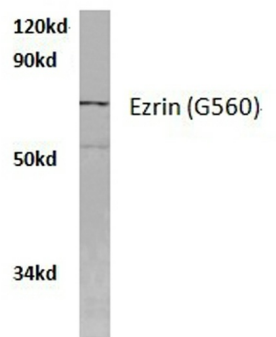
p81, Cytovillin, Villin-2, EZR, VIL2

Protein Families:

Druggable Genome

Protein Pathways:

Leukocyte transendothelial migration, Pathogenic Escherichia coli infection, Regulation of actin cytoskeleton

Product images:

HeLa whole cell lysate
Ezrin (G560) pAb at 1:500 dilution

Western blot (WB) analyzes of Ezrin antibody (Cat.-No.: [AP20686PU-N]) in extracts from HELA cells.